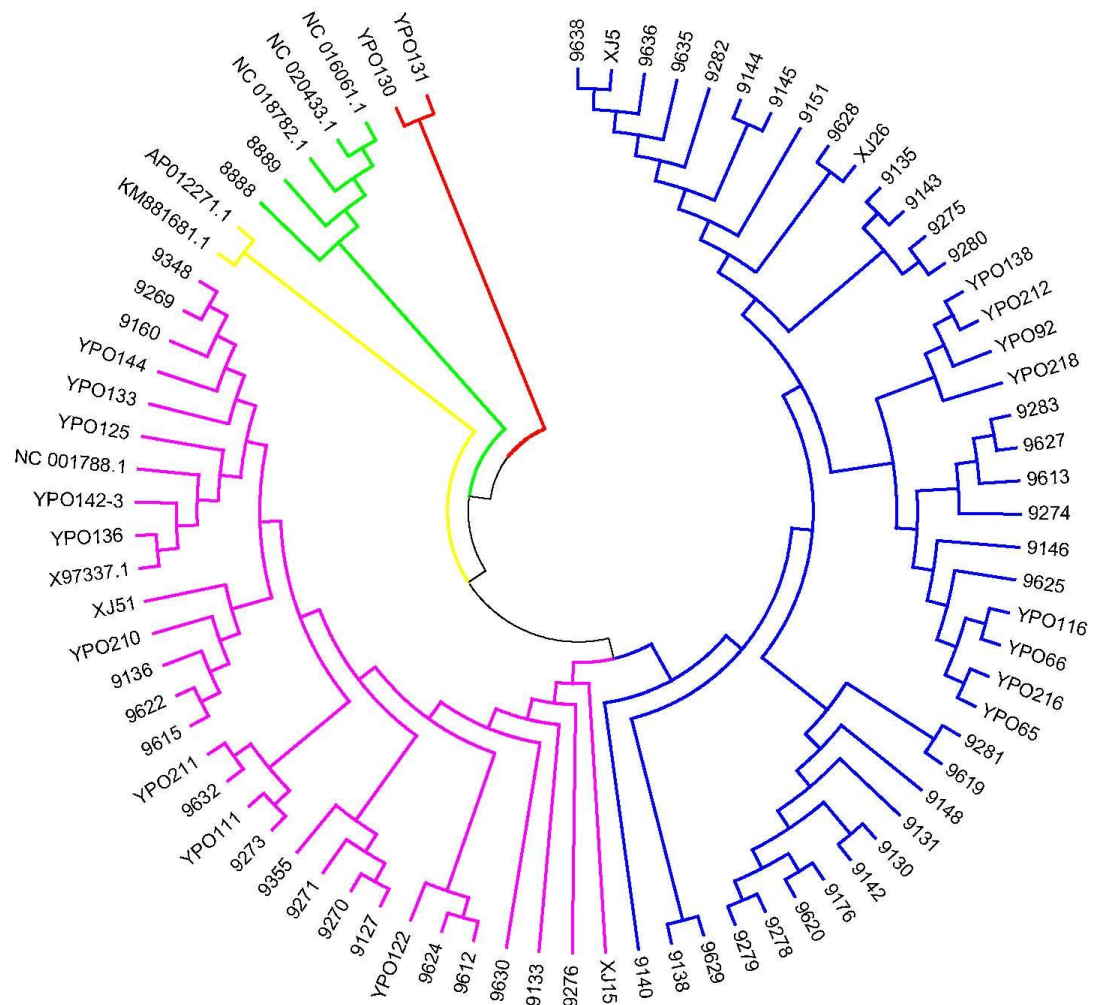


Supplementary Tables and Figures

Supplementary Figures

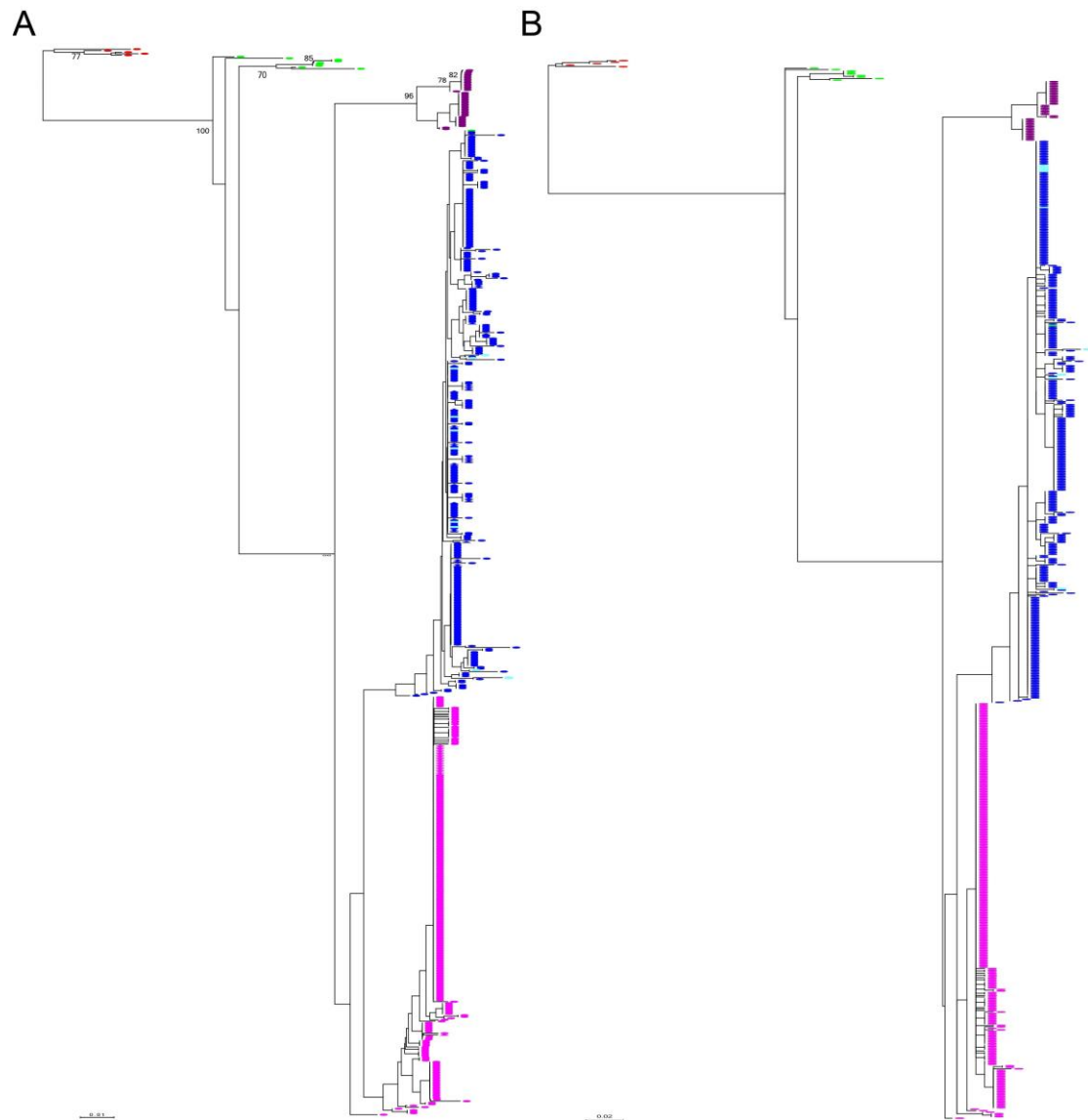


Supplementary Figure S1 Picture of blood collection from jugular vein of healthy donkey



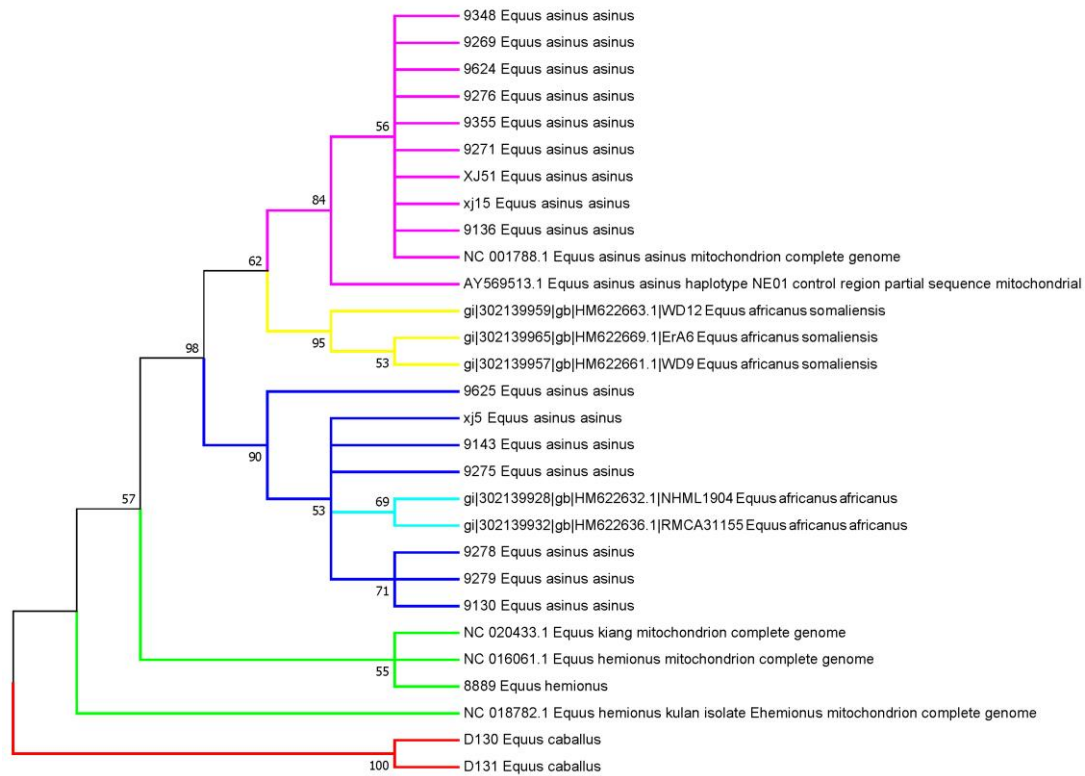
Supplementary Figure S2 Neighbor-joining phylogeny of *Equus* based on mtDNA coding regions

Colored branches denote different categories. Red: horse; green: Asiatic wild ass; yellow: Somali wild ass; blue: Clade I lineage; magenta: Clade II lineage.



Supplementary Figure S3 Phylogenetic tree of mitochondrial D-loop region using neighbor-joining and maximum likelihood methods

Colored dots denote different categories. Red: horse; green: Asiatic wild ass; dark magenta: Somali wild ass; blue: Clade I lineage; magenta: Clade II lineage; cyan: Nubian wild ass.



Supplementary Figure S4 Neighbor-joining phylogeny of mtDNA D-loop region with small sample size

Colored branches denote different categories. Red: horse; green: Asiatic wild ass; yellow: Somali wild ass; blue: Clade I lineage; magenta: Clade II lineage; cyan: Nubian wild ass.

Supplementary Tables

Supplementary Table S2 Primer pairs used for mitochondrial genome amplification

No.	Primer sequences	Position on mitochondrial genome
B2	F: ATTTCCATAGACAGGCATCC	16599
	R: TCACCTCTACCTACGAATCT	1439
B3	F: CGTAAGGGAACGATGAAAGAT	1232
	R: AATAGATAGAAACCGACCTGGAT	2565
B4	F: ACGAGAAGACCCTATGGAGC	2169
	R: GTGGAATAGGTTAGTCGTATGTAG	4835
B5	F: TACCTCTAACCCTACACTAATC	4646
	R: CATAATGGAAATGTGCTACTA	6499
B6	F: CGAGCATACTTCACATCAGC	6265
	R: TAGCGAAAGAGGCGAATAGA	7995
B7	F: GACTTTACTACGGTCAATGCTC	7616
	R: TTTCTTCTATTAGGCTATGGT	9108
B8	F: CCACCCACAGGTATCCAC	8993
	R: GATGAGGACGGCTACGAT	11113
B9	F: GAGGCTACGGAATACTACGAA	10992
	R: TAAAGGATTGCTTGAAGGG	12303
B10	F: GCTAACAACCTTTTCCAACCTG	12182
	R: GACCAGGGTAATGTGCGATA	15359
D4	F: CCAACAATTATACATCgACTCCACC CTC	11867
	R: ATCTTTCATCgTTCCTTACggT CTT TCT	16422

Supplementary Table S1 Sample information of 707 sequences

Supplementary Table S1 was listed as a separate Excel file, because the table is too big.