

Supplementary Materials

Indian monsoon drove the dispersal of the *thoracica* group of *Scytodes* spitting spiders

Yu-Fa Luo¹, Shu-Qiang Li^{2,3,*}

¹ *School of Life and Environmental Sciences, Shaoxing University, Shaoxing, Zhejiang 312000, China*

² *Key Laboratory of Zoological Systematics and Evolution, Institute of Zoology, Chinese Academy of Sciences, Beijing 100101, China*

³ *Southeast Asia Biodiversity Research Institute, Chinese Academy of Sciences, Yezin, Nay Pyi Taw 05282, Myanmar*

*Corresponding author, E-mail: lisq@ioz.ac.cn

Supplementary Table S1 Samples of the *thoracica* group: taxon name, specimen voucher, sample collection locality with coordinates, and GenBank accession numbers.

Taxon	Family	Voucher	Locality	cox1	16s	18s	28s	h3	ITS2
<i>Scytodes</i> sp. 47	Scytodidae	126	China, Guangxi (N22.80°, E107.81°)		ON507406	ON490589	ON507589		ON507288
<i>Scytodes</i> sp. 47	Scytodidae	127	China, Guangxi (N22.89°, E107.34°)	ON493182	ON507407	ON490590			
<i>Scytodes</i> sp. 47	Scytodidae	128	China, Guangxi (N24.06°, E107.17°)	ON493183	ON507408				
<i>Scytodes</i> sp. 47	Scytodidae	129	China, Guangxi (N23.75°, E107.01°)		ON507409	ON490591			
<i>Scytodes</i> sp. 47	Scytodidae	130	China, Guangxi (N23.03°, E107.14°)		ON507410				
<i>Scytodes</i> sp. 47	Scytodidae	131	China, Guangxi (N22.89°, E107.34°)	ON493184	ON507411				
<i>Scytodes</i> sp. 47	Scytodidae	132	China, Guangxi (N22.89°, E107.34°)	ON493185	ON507412				
<i>Scytodes</i> sp. 47	Scytodidae	133	China, Guangxi (N22.89°, E107.34°)	ON493186	ON507413				
<i>Scytodes</i> sp. 47	Scytodidae	135	China, Guangxi (N23.75°, E107.01°)	ON493187	ON507414				
<i>Scytodes</i> sp. 47	Scytodidae	136	China, Guangxi (N23.75°, E107.01°)	ON493188	ON507415				
<i>Scytodes</i> sp. 47	Scytodidae	137	China, Guangxi (N23.75°, E107.01°)	ON493189	ON507416				
<i>Scytodes</i> sp. 47	Scytodidae	138	China, Guangxi (N22.30°, E107.00°)	ON493190	ON507417				
<i>Scytodes</i> sp. 47	Scytodidae	139	China, Guangxi (N23.17°, E107.15°)	ON493191	ON507418				
<i>Scytodes</i> sp. 47	Scytodidae	140	China, Guangxi		ON507419		ON507590		
<i>Scytodes</i> sp. 47	Scytodidae	141	China, Guangxi	ON493192	ON507420	ON490592		ON507070	ON507289
<i>Scytodes</i> sp. 47	Scytodidae	142	China, Guangxi (N22.33°, E107.80°)	ON493193	ON507421	ON490593	ON507591		
<i>Scytodes</i> sp. 47	Scytodidae	143	China, Guangxi (N22.89°, E107.34°)	ON493194	ON507422				
<i>Scytodes</i> sp. 47	Scytodidae	144	China, Yunnan (N24.36°, E102.29°)	ON493195	ON507423	ON490594	ON507592		ON507290
<i>Scytodes</i> sp. 47	Scytodidae	145	China, Sichuang	ON493196	ON507424	ON490595			
<i>Scytodes</i> sp. 47	Scytodidae	146	China, Yunnan (N24.96°, E102.45°)	ON493197	ON507425	ON490596	ON507593		ON507291
<i>Scytodes</i> sp. 47	Scytodidae	147	China, Guangxi	ON493198	ON507426	ON490597	ON507594		ON507292
<i>Scytodes</i> sp. 47	Scytodidae	148	China, Guangxi	ON493199	ON507427	ON490598		ON507071	ON507293
<i>Scytodes</i> sp. 47	Scytodidae	149	China, Guangxi (N22.97°, E107.47°)	ON493200	ON507428		ON507595		

<i>Scytodes</i> sp. 47	Scytodidae	150	China, Guangxi (N22.33°, E107.80°)		ON507429				ON507294
<i>Scytodes</i> sp. 47	Scytodidae	151	China, Guangxi (N23.75°, E107.01°)	ON493201	ON507430		ON507596		
<i>Scytodes</i> sp. 47	Scytodidae	152	China, Guangxi (N22.89°, E107.34°)	ON493202	ON507431				
<i>Scytodes</i> sp. 47	Scytodidae	153	China, Guangxi (N23.03°, E107.14°)		ON507432				ON507295
<i>Scytodes</i> sp. 47	Scytodidae	154	China, Guangxi (N23.69°, E107.19°)	ON493203	ON507433	ON490599		ON507072	
<i>Scytodes</i> sp. 47	Scytodidae	155	China, Guangxi (N24.51°, E108.67°)	ON493204	ON507434			ON507073	
<i>Scytodes</i> sp. 47	Scytodidae	156	China, Guangxi (N24.51°, E108.67°)	ON493205	ON507435	ON490600	ON507597		
<i>Scytodes</i> aff. <i>thoracica</i>	Scytodidae	157	China, Guangxi (N23.60°, E106.99°)	ON493206	ON507436	ON490601	ON507598		ON507296
<i>Scytodes</i> aff. <i>thoracica</i>	Scytodidae	158	China, Yunnan (N23.59°, E101.97°)		ON507437	ON490602	ON507599		ON507297
<i>Scytodes</i> aff. <i>thoracica</i>	Scytodidae	159	China, Guangxi (N23.75°, E107.01°)	ON493207	ON507438		ON507600		ON507298
<i>Scytodes</i> aff. <i>thoracica</i>	Scytodidae	160	China, Guangxi (N24.65°, E105.16°)	ON493208	ON507439			ON507074	ON507299
<i>Scytodes</i> <i>thoracica</i>	Scytodidae	161	China, Hainan (N19.95°, E110.57°)	ON493209	ON507440		ON507601		
<i>Scytodes</i> <i>thoracica</i>	Scytodidae	162	China, Hainan (N19.95°, E110.57°)	ON493210	ON507441	ON490603	ON507602		
<i>Scytodes</i> <i>thoracica</i>	Scytodidae	163	Thailand (N18.96°, E98.92°)	ON493211	ON507442	ON490604	ON507603		ON507300
<i>Scytodes</i> <i>thoracica</i>	Scytodidae	164	China, Hainan (N19.17°, E110.40°)	ON493212	ON507443	ON490605	ON507604		ON507301
<i>Scytodes</i> <i>thoracica</i>	Scytodidae	165	China, Hainan (N19.17°, E110.40°)	ON493213	ON507444	ON490606	ON507605		ON507302
<i>Scytodes</i> <i>thoracica</i>	Scytodidae	166	Indonesia, Sumatra (N2.68°, E98.69°)	ON493214	ON507445	ON490607	ON507606		ON507303
<i>Scytodes</i> <i>thoracica</i>	Scytodidae	167	China, Hainan (N19.95°, E110.57°)	ON493215	ON507446		ON507607		ON507304
<i>Scytodes</i> sp. 9	Scytodidae	168	China, Hainan (N18.21°, E109.56°)	ON493216	ON507447			ON507075	ON507305
<i>Scytodes</i> sp. 9	Scytodidae	169	China, Hainan (N18.21°, E109.56°)	ON493217	ON507448	ON490608		ON507076	
<i>Scytodes</i> sp. 9	Scytodidae	170	China, Hainan (N18.21°, E109.56°)	ON493218	ON507449				
<i>Scytodes</i> sp. 10	Scytodidae	171	China, Hainan (N19.46°, E110.12°)	ON493219	ON507450	ON490609	ON507608	ON507077	ON507306
<i>Scytodes</i> sp. 10	Scytodidae	172	China, Hainan (N19.11°, E109.55°)	ON493220	ON507451	ON490610	ON507609	ON507078	ON507307
<i>Scytodes</i> sp. 10	Scytodidae	173	China, Hainan (N18.67°, E109.90°)	ON493221	ON507452	ON490611	ON507610	ON507079	ON507308
<i>Scytodes</i> sp. 11	Scytodidae	174	Thailand (N15.19°, E102.79°)	ON493222	ON507453	ON490612	ON507611	ON507080	ON507309
<i>Scytodes</i> sp. 15	Scytodidae	175	Laos (N15.09°, E105.81°)	ON493223	ON507454	ON490613	ON507612	ON507081	ON507310
<i>Scytodes</i> sp. 16	Scytodidae	176	China, Guangxi (N24.64°, E110.44°)	ON493224	ON507455	ON490614	ON507613	ON507082	ON507311

<i>Scytodes</i> sp. 17	Scytodidae	177	Thailand (N14.49°, E101.92°)	ON493225	ON507456	ON490615	ON507614	ON507083	ON507312
<i>Scytodes</i> sp. 17	Scytodidae	178	Thailand (N14.51°, E101.93°)		ON507457	ON490616	ON507615	ON507084	ON507313
<i>Scytodes</i> sp. 22	Scytodidae	179	Indonesia, Sumatra (N2.69°, E98.82°)		ON507458	ON490617	ON507616	ON507085	ON507314
<i>Scytodes</i> sp. 25	Scytodidae	180	China, Taiwan (N21.94°, E120.81°)	ON493226	ON507459	ON490618	ON507617	ON507086	
<i>Scytodes</i> sp. 22	Scytodidae	181	Indonesia, Sumatra (N2.69°, E98.82°)		ON507460	ON490619	ON507618	ON507087	ON507315
<i>Scytodes</i> sp. 27	Scytodidae	182	Indonesia, Sumatra (N2.63°, E98.66°)		ON507461	ON490620	ON507619	ON507088	
<i>Scytodes</i> sp. 27	Scytodidae	183	Indonesia, Sumatra (N2.63°, E98.66°)		ON507462	ON490621	ON507620	ON507089	
<i>Scytodes</i> sp. 31	Scytodidae	185	Thailand (N6.98°, E99.79°)	ON493227	ON507463	ON490622	ON507621	ON507090	ON507316
<i>Scytodes</i> sp. 20	Scytodidae	186	Thailand (N7.11°, E99.79°)	ON493228	ON507464	ON490623			ON507317
<i>Scytodes</i> sp. 33	Scytodidae	187	China, Yunnan (N24.96°, E102.45°)	ON493229	ON507465	ON490624		ON507091	
<i>Scytodes</i> sp. 34	Scytodidae	188	China, Yunnan (N27.01°, E102.96°)		ON507466	ON490625		ON507092	
<i>Scytodes</i> sp. 38	Scytodidae	189	China, Yunnan (N21.41°, E101.63°)	ON493230	ON507467	ON490626	ON507622	ON507093	
<i>Scytodes</i> sp. 38	Scytodidae	190	China, Yunnan (N21.91°, E101.28°)	ON493231	ON507468	ON490627		ON507094	
<i>Scytodes</i> sp. 38	Scytodidae	191	China, Yunnan (N21.41°, E101.63°)	ON493232	ON507469	ON490628		ON507095	
<i>Scytodes</i> sp. 38	Scytodidae	192	China, Yunnan (N21.97°, E101.20°)		ON507470	ON490629		ON507096	
<i>Scytodes</i> sp. 38	Scytodidae	193	China, Yunnan (N21.40°, E101.60°)	ON493233	ON507471	ON490630		ON507097	
<i>Scytodes</i> sp. 7	Scytodidae	194	Seychelles (S4.29°, E55.87°)	PP117937	PP118705	PP118605	PP118768	PP156448	PP118852
<i>Scytodes</i> sp. 72	Scytodidae	195	Greece (N41.35°, E26.45°)	PP117938	PP118706	PP118606	PP118769	PP156449	PP118853
<i>Scytodes</i> sp. 72	Scytodidae	196	Turkey (N36.54°, E32.11°)		PP118707			PP156450	PP118854
<i>Scytodes</i> sp. 71	Scytodidae	197	Turkey (N36.54°, E32.11°)		PP118708			PP156451	PP118855
<i>Scytodes</i> sp. 70	Scytodidae	198	Greece (N35.28°, E25.36°)	PP117939	PP118709	PP118607	PP118770	PP156452	PP118856
<i>Scytodes</i> sp. 70	Scytodidae	199	Greece (N35.32°, E25.55°)	PP117940	PP118710	PP118608	PP118771	PP156453	PP118857
<i>Scytodes</i> sp. 69	Scytodidae	200	Greece (N36.29°, E27.95°)	PP117941	PP118711	PP118609	PP118772	PP156454	PP118858
<i>Scytodes</i> sp. 68	Scytodidae	201	Romania (N45.07°, E22.76°)	PP117942	PP118712	PP118610	PP118773		PP118859
<i>Scytodes</i> sp. 36	Scytodidae	202	Indonesia, Sumatra (S0.10°, E100.66°)			ON490631		ON507098	
<i>Scytodes</i> sp. 1	Scytodidae	218	Indonesia, Sumatra (S0.74°, E100.84°)	ON493247	ON507486	ON490645		ON507111	ON507332
<i>Scytodes</i> sp. 37	Scytodidae	247	Indonesia, Sumatra (S0.10°, E100.66°)	ON493262					

<i>Scytodes</i> sp. 47	Scytodidae	262	China, Guangxi (N23.03°, E107.14°)		ON507491	ON490657			
<i>Scytodes</i> sp. 47	Scytodidae	266	China, Guangxi (N23.81°, E107.53°)	ON493263					
<i>Scytodes</i> sp. 47	Scytodidae	280	China, Guangxi (N23.64°, E106.70°)			ON490658			
<i>Scytodes</i> sp. 41	Scytodidae	286	Thailand (N18.81°, E98.90°)	ON493266	ON507494	ON490661	ON507646	ON507128	ON507347
<i>Scytodes</i> sp. 12	Scytodidae	300	Thailand (N14.75°, E101.03°)	ON493279	ON507504	ON490674	ON507657	ON507141	ON507357
<i>Scytodes</i> sp. 58	Scytodidae	303	Thailand (N18.53°, E98.52°)			ON490676			ON507359
<i>Scytodes</i> sp. 38	Scytodidae	321	Thailand (N19.58°, E99.06°)	ON493287	ON507515	ON490686		ON507150	
<i>Scytodes fusca</i>	Scytodidae	322	Thailand (N14.56°, E101.40°)	ON493288	ON507516	ON490687	ON507666	ON507151	ON507367
<i>Scytodes</i> sp. 10	Scytodidae	332	China, Hainan (N19.01°, E109.07°)	ON493293	ON507520		ON507671	ON507155	ON507369
<i>Scytodes</i> sp. 42	Scytodidae	333	Thailand (N9.48°, E98.51°)			ON490692		ON507156	
<i>Scytodes</i> sp. 26	Scytodidae	334	China, Fujian (N24.51°, E118.11°)	ON493294		ON490693	ON507672	ON507157	
<i>Scytodes</i> sp. 40	Scytodidae	338	Thailand (N13.59°, E99.76°)	ON493295	ON507521	ON490694	ON507673		ON507370
<i>Scytodes</i> sp. 33	Scytodidae	340	China, Guizhou (N24.83°, E104.66°)		ON507522	ON490696		ON507159	ON507372
<i>Scytodes</i> sp. 40	Scytodidae	342	Thailand (N13.58°, E99.76°)	ON493297	ON507523	ON490697	ON507674	ON507160	
<i>Scytodes thoracica</i>	Scytodidae	357	Sri Lanka (N6.43°, E80.73°)	ON493298		ON490698		ON507161	
<i>Scytodes thoracica</i>	Scytodidae	359	Sri Lanka (N6.03°, E80.24°)	ON493299					
<i>Scytodes thoracica</i>	Scytodidae	360	Sri Lanka (N7.91°, E80.00°)	ON493300	ON507524		ON507675		
<i>Scytodes thoracica</i>	Scytodidae	362	Sri Lanka (N6.62°, E80.87°)	ON493302		ON490700		ON507163	
<i>Scytodes thoracica</i>	Scytodidae	363	Sri Lanka (N7.66°, E80.65°)	ON493303			ON507677		
<i>Scytodes thoracica</i>	Scytodidae	364	Sri Lanka (N7.28°, E80.60°)	ON493304		ON490701		ON507164	
<i>Scytodes</i> sp. 5	Scytodidae	366	Vietnam (N11.73°, E107.19°)		ON507527	ON490703	ON507679	ON507165	
<i>Scytodes</i> sp. 16	Scytodidae	368	Vietnam (N20.25°, E105.72°)	ON493306	ON507528	ON490704	ON507680	ON507166	
<i>Scytodes</i> sp. 16	Scytodidae	370	Vietnam (N17.55°, E106.30°)	ON493307	ON507529	ON490705		ON507167	ON507373
<i>Scytodes</i> sp. 69	Scytodidae	371	Tajikistan (N38.04°, E70.36°)			PP118643		PP156457	PP118886
<i>Scytodes</i> sp. 13	Scytodidae	382	Philippines (N15.80°, E120.66°)	ON493313		ON490711	ON507684	ON507170	ON507378
<i>Scytodes</i> sp. 2	Scytodidae	384	Philippines (N17.11°, E120.94°)	ON493315	ON507533	ON490713	ON507685	ON507172	ON507380
<i>Scytodes</i> sp. 3	Scytodidae	385	Philippines (N14.86°, E121.09°)	ON493316		ON490714	ON507686	ON507173	ON507381

<i>Scytodes</i> sp. 2	Scytodidae	386	Philippines (N17.09°, E120.91°)	ON493317	ON507534	ON490715	ON507687	ON507174	ON507382
<i>Scytodes</i> sp. 35	Scytodidae	390	Singapore (N1.42°, E103.80°)	ON493318		ON490716		ON507175	
<i>Scytodes</i> sp. 31	Scytodidae	391	Singapore (N1.42°, E103.80°)	ON493319	ON507535	ON490717	ON507688	ON507176	ON507383
<i>Scytodes</i> sp. 14	Scytodidae	392	Singapore (N1.42°, E103.94°)	ON493320		ON490718	ON507689		ON507384
<i>Scytodes</i> sp. 45	Scytodidae	393	Singapore (N1.35°, E103.81°)	ON493321	ON507536	ON490719		ON507177	ON507385
<i>Scytodes</i> sp. 35	Scytodidae	394	Singapore (N1.35°, E103.81°)			ON490720		ON507178	
<i>Scytodes</i> sp. 35	Scytodidae	395	Singapore (N1.41°, E103.79°)	ON493322				ON507179	
<i>Scytodes</i> sp. 35	Scytodidae	396	Singapore (N1.41°, E103.79°)	ON493323		ON490721		ON507180	
<i>Scytodes</i> sp. 47	Scytodidae	401	China, Guangxi (N23.13°, E107.83°)	ON493324	ON507537	ON490722	ON507690	ON507181	ON507386
<i>Scytodes</i> sp. 16	Scytodidae	402	China, Yunnan (N23.03°, E103.40°)		ON507538	ON490723	ON507691		ON507387
<i>Scytodes</i> sp. 6	Scytodidae	413	Thailand (N6.94°, E99.77°)	ON493330	ON507540	ON490729	ON507696	ON507186	ON507393
<i>Scytodes</i> sp. 7	Scytodidae	417	Thailand (N7.45°, E100.13°)	ON493333	ON507542	ON490732	ON507699	ON507189	
<i>Scytodes</i> sp. 7	Scytodidae	419	Thailand (N8.43°, E98.57°)	ON493334	ON507543	ON490733	ON507700	ON507190	ON507396
<i>Scytodes</i> sp. 7	Scytodidae	430	Thailand (N6.94°, E100.02°)	ON493341	ON507548	ON490739	ON507706	ON507197	
<i>Scytodes</i> sp. 46	Scytodidae	431	Thailand (N5.74°, E101.04°)	ON493342	ON507549	ON490740	ON507707		ON507401
<i>Scytodes</i> sp. 47	Scytodidae	433	China, Guangxi (N24.35°, E107.32°)	ON493344	ON507550	ON490742	ON507709		ON507403
<i>Scytodes</i> sp. 8	Scytodidae	440	Thailand (N13.65°, E99.74°)			ON490745	ON507710	ON507201	
<i>Scytodes</i> aff. <i>thoracica</i>	Scytodidae	441	China, Yunnan (N25.45°, E98.85°)		ON507553	ON490746	ON507711		
<i>Scytodes</i> sp. 31	Scytodidae	448	Myanmar (N16.96°, E94.52°)	ON493349	ON507556	ON490749			
<i>Scytodes</i> sp. 31	Scytodidae	449	Myanmar (N16.96°, E94.52°)	ON493350	ON507557	ON490750			
<i>Scytodes</i> sp. 30	Scytodidae	451	Myanmar (N21.08°, E94.32°)	ON493352	ON507559	ON490752			
<i>Scytodes</i> sp. 21	Scytodidae	453	Myanmar (N19.92°, E95.97°)	ON493353	ON507560				
<i>Scytodes</i> sp. 56	Scytodidae	454	Myanmar (N27.54°, E97.03°)	ON493354	ON507561	ON490753	ON507714	ON507205	
<i>Scytodes</i> sp. 7	Scytodidae	460	Indonesia, Sulawesi (S5.58°, E120.45°)	ON493357	ON507564	ON490756	ON507716	ON507208	
<i>Scytodes</i> aff. <i>thoracica</i>	Scytodidae	461	China, Yunnan (N26.12°, E98.86°)		ON507565	ON490757	ON507717	ON507209	
<i>Scytodes</i> aff. <i>thoracica</i>	Scytodidae	462	China, Yunnan (N26.12°, E98.86°)			ON490758			
<i>Scytodes</i> sp. 75	Scytodidae	463	Madagascar (S12.53°, E49.17°)					PP156461	

<i>Scytodes</i> sp. 24	Scytodidae	464	Myanmar (N20.58°, E96.96°)		ON507566	ON490759	ON507718	ON507210	
<i>Scytodes</i> sp. 54	Scytodidae	468	China, Xizang (N27.42°, E88.95°)	ON493360		ON490762	ON507720	ON507213	
<i>Scytodes</i> sp. 30	Scytodidae	469	Myanmar (N25.69°, E97.49°)	ON493361		ON490763	ON507721	ON507214	
<i>Scytodes</i> sp. 74	Scytodidae	472	Madagascar (S12.95°, E49.12°)		PP118740			PP156462	
<i>Scytodes</i> sp. 27	Scytodidae	473	Myanmar (N20.58°, E96.85°)		ON507570	ON490765	ON507722	ON507216	
<i>Scytodes</i> sp. 44	Scytodidae	475	Myanmar (N14.74°, E98.19°)	ON493364		ON490767		ON507218	
<i>Scytodes</i> sp. 73	Scytodidae	476	Madagascar (S18.94°, E48.42°)			PP175928			
<i>Scytodes</i> sp. 7	Scytodidae	478	Indonesia, Borneo (S4.06°, E114.93°)	ON493365	ON507571	ON490768	ON507724	ON507219	
<i>Scytodes</i> sp. 44	Scytodidae	479	Myanmar (N14.74°, E98.24°)			ON490769	ON507725	ON507220	
<i>Scytodes</i> sp. 28	Scytodidae	481	Myanmar (N20.98°, E96.64°)		ON507573	ON490771	ON507727	ON507222	
<i>Scytodes</i> sp. 32	Scytodidae	482	Myanmar (N21.22°, E93.98°)	ON493367		ON490772	ON507728	ON507223	
<i>Scytodes</i> aff. <i>thoracica</i>	Scytodidae	483	Thailand (N16.88°, E98.64°)	ON493368	ON507574	ON490773	ON507729	ON507224	
<i>Scytodes</i> sp. 18	Scytodidae	484	Thailand (N17.11°, E104.00°)		ON507575	ON490774			
<i>Scytodes</i> sp. 29	Scytodidae	486	China, Yunnan (N22.04°, E100.39°)	ON493370		ON490775	ON507730	ON507226	
<i>Scytodes</i> sp. 67	Scytodidae	488	St. Vincent (N13.32°, W61.15°)	PP118001		PP118662	PP118813	PP156463	
<i>Scytodes</i> sp. 19	Scytodidae	490	Thailand (N16.73°, E101.85°)	ON493373	ON507578	ON490778	ON507732	ON507229	
<i>Scytodes</i> sp. 39	Scytodidae	491	Thailand (N19.66°, E99.10°)			ON490779		ON507230	
<i>Scytodes</i> sp. 22	Scytodidae	493	China, Yunnan (N25.00°, E98.93°)	ON493374	ON507579	ON490780	ON507733	ON507231	
<i>Scytodes</i> sp. 43	Scytodidae	494	Thailand (N12.77°, E101.80°)	ON493375		ON490781		ON507232	
<i>Scytodes</i> sp. 20	Scytodidae	495	Thailand (N16.82°, E101.94°)		ON507580	ON490782	ON507734	ON507233	
<i>Scytodes</i> sp. 22	Scytodidae	498	Thailand (N23.76°, E97.97°)	ON493377	ON507582	ON490784		ON507235	
<i>Scytodes</i> sp. 29	Scytodidae	501	China, Yunnan (N22.04°, E100.39°)	ON493379		ON490786		ON507237	
<i>Scytodes mayahuel</i>	Scytodidae	515	America (N19.18°, W96.15°)	PP118010		PP118670	PP118818	PP156470	
<i>Scytodes</i> sp. 65	Scytodidae	518	Costa Rica (N10.22°, W84.26°)			PP118671	PP118819	PP156471	PP118900
<i>Scytodes mayahuel</i>	Scytodidae	527	Mexico (N19.18°, W96.15°)	PP118013	PP118748	PP118674	PP118822	PP156474	
<i>Scytodes</i> sp. 63	Scytodidae	533	Mexico (N19.18°, W96.15°)		PP118750	PP118676	PP118824	PP156476	PP118901
<i>Scytodes mayahuel</i>	Scytodidae	534	Mexico (N19.18°, W96.15°)	PP118015		PP118677	PP118825	PP156477	PP118902

<i>Scytodes</i> sp. 67	Scytodidae	539	Grenada (N12.12°, W61.65°)	PP118017		PP118679	PP118827	PP156479	
<i>Scytodes mayahuel</i>	Scytodidae	552	Mexico (N19.19°, W96.16°)	PP118027	PP118760	PP118688	PP118837	PP156489	
<i>Scytodes</i> sp. 64	Scytodidae	554	Mexico (N20.21°, W87.43°)		PP118761	PP118690	PP118839	PP156491	
<i>Scytodes mayahuel</i>	Scytodidae	555	Mexico (N18.59°, W98.07°)		PP118762	PP118691	PP118840	PP156492	
<i>Scytodes mayahuel</i>	Scytodidae	562	Mexico (N19.19°, W96.16°)	PP118029	PP118763	PP118692	PP118841		
<i>Scytodes</i> sp. 63	Scytodidae	564	USA (N34.00°, W81.02°)	PP118030		PP118693		PP156493	
<i>Scytodes</i> sp. 65	Scytodidae	567	Costa Rica (N10.10°, W84.12°)			PP118694	PP118842	PP156494	
<i>Scytodes mayahuel</i>	Scytodidae	572	Mexico (N19.19°, W96.16°)	PP118032	PP118765	PP118696	PP118844	PP156496	PP118907
<i>Scytodes</i> sp. 65	Scytodidae	576	Costa Rica (N10.10°, W84.12°)			PP118697	PP118845	PP156497	
<i>Scytodes</i> sp.	Scytodidae	578	Costa Rica (N10.04°, W84.09°)			PP118698	PP118846	PP156498	
<i>Scytodes</i> sp. 67	Scytodidae	586	Grenadnes Union Island (N12.60°, W61.44°)	PP118033		PP118699	PP118847	PP156499	
<i>Scytodes</i> sp. 67	Scytodidae	589	Grenadnes Union Island (N12.60°, W61.44°)	PP118034		PP118700	PP118848	PP156500	
<i>Scytodes aff. thoracica</i>	Scytodidae	ADB035	India, Maharashtra (N18.53°, E73.85°)	KT383698*					
<i>Scytodes thoracica</i>	Scytodidae	AA419	India (N27.43°, E95.50°)	MK393106*					
<i>Scytodes thoracica</i>	Scytodidae	AA427	India (N27.43°, E95.50°)	MK393107*					
<i>Scytodes thoracica</i>	Scytodidae	AA432	India (N22.55°, E88.29°)	MK393108*					
<i>Scytodes</i> sp.	Scytodidae	AMNH	South Africa, KwaZulu-Natal			KY016686		KY018414	
<i>Scytodes socialis</i>	Scytodidae		Madagascar	KX514651	KX514509	KX514553		KX298937	
<i>Scytodes</i> sp.	Scytodidae	GJB-2008	Costa Rica: Osa				EU817720		
<i>Scytodes</i> sp.	Scytodidae	CCDB-04287-H04	Canada (N43.71°, W79.26°)	HM434056					
<i>Scytodes</i> sp. 71	Scytodidae	ST20130322-12	Turkey: Antalya (N36.90°, E30.68°)	KR864739	KR864745				
<i>Scytodes</i> sp. 68	Scytodidae	00786521	Slovenia (N46.16°, E14.69°)	KX039371					
<i>Scytodes</i> sp. 68	Scytodidae	GBOL 01997	Germany: Bavaria (N48.14°, E11.58°)	KX537463					
<i>Scytodes</i> sp.	Scytodidae	AMNH/UBC/MACN	Ecuador: Napo			KY016685			
<i>Scytodes</i> sp. 68	Scytodidae	ZFMK-TIS-19152	Germany (N53.87°, E10.69°)	KY269290					
<i>Scytodes</i> sp. 68	Scytodidae	ZFMK-TIS-2517028	Germany (N50.72°, E7.11°)	KY269347					
<i>Stedocys ludyianensis</i>	Scytodidae	GGL	China, Guilin (N25.31°, E110.26°)	ON493384	ON507587	ON490790	ON507737	ON507241	ON507404

<i>Stedocys shilinensis</i>	Scytodidae	120	China, Hainan (N18.60°, E109.43°)	ON493385	ON507588	ON490791	ON507738	ON507242	ON507405
<i>Scyloxes zhaoi</i>	Scytodidae	318	Thailand (N14.20°, E99.03°)	ON493386		ON490792	ON507739	ON507243	
<i>Loxosceles laeta</i>	Sicariidae	LPisco	Peru	GQ279223*	GQ279181*		GQ279183*		
<i>Loxosceles rufescens</i>	Sicariidae	Slrlyf374	China, Jiangxi (N27.91°, E114.19°)	ON493383	ON507586	ON490789	ON507736	ON507240	
<i>Hexophthalma damarensis</i>	Sicariidae	Sdaanviljoen1	Namibia				EU817749*		
<i>Sicarius peruensis</i>	Sicariidae	IBSP 162919			MN242319*		MN219621*	MN207552*	
<i>Dysdera erythrina fervida</i>	Dysderidae		France	GQ285630*	GQ285606*		GQ285615*	GQ285625*	
<i>Dysdera silvatica</i>	Dysderidae	dyssilK94	Canary Islands	AF244273*	EU139674*		EU139808*	EU139739*	
<i>Dysdera silvatica</i>	Dysderidae	nhm000289	Canary Islands			JN689050*			
<i>Dysderocrates silvestris</i>	Dysderidae		Croatia	AF244236*	AF244151*			EU139755*	
<i>Harpactea hombergi</i>	Dysderidae		Spain	AF244233*	AF244148*		EU139820*	EU139752*	
<i>Harpactea hombergi</i>	Dysderidae	86	Belgium			KF929033*			
<i>Harpactocrates radulifer</i>	Dysderidae		Spain	AF244235*			EU139821*	EU139753*	
<i>Harpactocrates radulifer</i>	Dysderidae	qrad1181	Spain		KM219561*				
<i>Harpactocrates radulifer</i>	Dysderidae	nhm000300	Spain			JN689052*			
<i>Rhode scutiventris</i>	Dysderidae		Spain	EU139636*	EU139684*		EU139822*	EU139754*	
<i>Ariadna fidicina</i>	Segestriidae			FJ607555*	FJ607447*	FJ607481*	FJ607520*	FJ607594*	
<i>Ariadna boesenbergi</i>	Segestriidae	MACN-Ar 11425	Argentina		KY016102*	KY016688*	KY017341*	KY018416*	
<i>Segestria bavarica</i>	Segestriidae		Germany	AY560802*			AY560765*		
<i>Segestria senoculata</i>	Segestriidae	CRBA	France	KY017905*	KY016104*	KY016690*	KY017343*		
<i>Segestria senoculata</i>	Segestriidae	og_067						MN706523*	

* sequences from GenBank.

Supplementary Table S2 Samples of the *fusca* group of *Scytodes*: taxon name, specimen voucher, Haplotype, sample collection locality with coordinates, and GenBank accession numbers.

Taxon	Family	Voucher	Haplotype	Locality	cox1	16s	18s	28s	h3	ITS2
<i>Scytodes fusca</i>	Scytodidae	218	Hap01	Indonesia, Sumatra (S0.74°, E100.84°)	PP117943		PP118611			PP118860
<i>Scytodes fusca</i>	Scytodidae	219	Hap02	Indonesia, Sumatra (S0.74°, E100.84°)	PP117944	PP118713	PP118612		ON507112	PP118861
<i>Scytodes fusca</i>	Scytodidae	220	Hap03	Indonesia, Sumatra (S0.26°, E100.60°)	PP117945	PP118714	PP118613		ON507113	
<i>Scytodes fusca</i>	Scytodidae	221	Hap04	Indonesia, Sumatra (S0.74°, E100.84°)		PP118715		PP118774	ON507114	
<i>Scytodes fusca</i>	Scytodidae	222	Hap05	Indonesia, Sumatra (S0.26°, E100.60°)	PP117946	PP118716	PP118613		ON507115	PP118862
<i>Scytodes fusca</i>	Scytodidae	223	Hap09	Indonesia, Sumatra (S2.08°, E101.37°)	PP117947		PP118615	PP118775	ON507116	PP118863
<i>Scytodes fusca</i>	Scytodidae	224	Hap16	Indonesia, Sumatra (S0.25°, E100.48°)						PP118864
<i>Scytodes fusca</i>	Scytodidae	225	Hap06	Indonesia, Sumatra (S0.21°, E100.42°)	PP117948		PP118616	PP118776	ON507117	PP118865
<i>Scytodes fusca</i>	Scytodidae	227	Hap37	China, Guangxi (N24.30°, E109.41°)	PP117949				ON507118	
<i>Scytodes fusca</i>	Scytodidae	228	Hap07	China, Taiwan (N21.96°, E120.82°)	PP117950g		PP118617	PP118777		PP118866
<i>Scytodes fusca</i>	Scytodidae	229	Hap09	Thailand (N16.65°, E100.71°)	PP117951		PP118618	PP118778	ON507119	PP118867
<i>Scytodes fusca</i>	Scytodidae	230	Hap08	Thailand (N16.68°, E100.70°)	PP117952		PP118619		ON507120	
<i>Scytodes fusca</i>	Scytodidae	231	Hap09	Indonesia, Sumatra (S0.21°, E100.42°)	PP117953		PP118620	PP118779	ON507121	PP118868
<i>Scytodes fusca</i>	Scytodidae	232	Hap10	China, Guangxi (N24.30°, E109.41°)	PP117954					PP118869
<i>Scytodes fusca</i>	Scytodidae	233	Hap11	Indonesia, Sumatra (S0.25°, E100.48°)	PP117955		PP118621	PP118780	ON507122	
<i>Scytodes fusca</i>	Scytodidae	234	Hap12	Thailand (N19.39°, E98.93°)	PP117956			PP118781	ON507123	PP118870
<i>Scytodes fusca</i>	Scytodidae	236	Hap13	China, Guangxi (N24.30°, E109.41°)	PP117957			PP118782	ON507124	PP118871
<i>Scytodes fusca</i>	Scytodidae	238	Hap14	China, Taiwan (N21.96°, E120.82°)					ON507125	
<i>Scytodes fusca</i>	Scytodidae	287	Hap34	Thailand (N14.56°, E101.40°)	PP117958	PP118717	PP118622	PP118783	ON507129	PP118872
<i>Scytodes fusca</i>	Scytodidae	288	Hap34	Thailand (N14.56°, E101.40°)	PP117959	PP118718	PP118623	PP118784	ON507130	PP118872
<i>Scytodes fusca</i>	Scytodidae	289	Hap34	Thailand (N14.56°, E101.40°)	PP117960	PP118719	PP118624	PP118785	ON507131	PP118874
<i>Scytodes fusca</i>	Scytodidae	290	Hap15	Thailand (N14.56°, E101.40°)	PP117961		PP118625	PP118786	ON507132	PP118875
<i>Scytodes fusca</i>	Scytodidae	290_2	Hap16	Thailand (N14.56°, E101.40°)						PP118876

<i>Scytodes fusca</i>	Scytodidae	293	Hap40	Thailand (N18.16°, E97.93°)	PP117962		PP118626	PP118787	ON507136	PP118877
<i>Scytodes fusca</i>	Scytodidae	294	Hap34	Thailand (N18.16°, E97.93°)	PP117963	PP118720	PP118627	PP118788	ON507137	PP118878
<i>Scytodes fusca</i>	Scytodidae	296	Hap34	Thailand (N13.70°, E99.76°)	PP117964	PP118721	PP118628	PP118789	ON507138	PP118879
<i>Scytodes fusca</i>	Scytodidae	298	Hap17	Thailand (N14.75°, E101.03°)	PP117965		PP118629	PP118790	ON507139	
<i>Scytodes fusca</i>	Scytodidae	299	Hap35	Thailand (N14.75°, E101.03°)	PP117966	PP118722	PP118630	PP118791	ON507140	
<i>Scytodes fusca</i>	Scytodidae	305	Hap18	Thailand (N14.66°, E100.97°)	PP117967	PP118723	PP118631	PP118792	ON507142	
<i>Scytodes fusca</i>	Scytodidae	306	Hap19	Thailand (N14.66°, E100.97°)	PP117968	PP118724	PP118632		ON507143	
<i>Scytodes fusca</i>	Scytodidae	310	Hap34	Thailand (N10.33°, E98.77°)	PP117969	PP118725	PP118633	PP118793	ON507144	PP118880
<i>Scytodes fusca</i>	Scytodidae	311	Hap20	Thailand (N10.33°, E98.77°)	PP117970	PP118726	PP118634	PP118794	ON507145	PP118881
<i>Scytodes fusca</i>	Scytodidae	313	Hap34	Thailand (N18.50°, E98.68°)	PP117971	PP118727	PP118635	PP118795	ON507146	PP118882
<i>Scytodes fusca</i>	Scytodidae	314	Hap34	Thailand (N18.50°, E98.68°)	PP117972	PP118728	PP118636	PP118796	ON507147	PP118883
<i>Scytodes fusca</i>	Scytodidae	322	Hap21	Thailand (N14.56°, E101.40°)	PP117973		PP118637	PP118797	ON507151	PP118884
<i>Scytodes fusca</i>	Scytodidae	324	Hap35	Thailand (N13.50°, E99.74 °)	PP117974	PP118729	PP118638	PP118798	ON507152	
<i>Scytodes fusca</i>	Scytodidae	325	Hap35	Thailand (N13.50°, E99.74 °)	PP133133	PP130658	PP130678	PP130701	ON507153	
<i>Scytodes fusca</i>	Scytodidae	327	Hap22	China, Hainan (N19.10°, E109.02°)	PP117975			PP118799	ON507154	
<i>Scytodes fusca</i>	Scytodidae	339	Hap23	Thailand (N8.52°, E98.57°)	PP117976		PP118639		ON507158	PP118885
<i>Scytodes fusca</i>	Scytodidae	350	Hap24	Fiji (S17.77°, E177.95°)	PP117977		PP118640			
<i>Scytodes fusca</i>	Scytodidae	351	Hap25	Fiji (S17.77°, E177.95°)	PP117978					
<i>Scytodes fusca</i>	Scytodidae	353	Hap26	Fiji (S17.85°, E178.26°)	PP117979				PP156455	
<i>Scytodes fusca</i>	Scytodidae	355	Hap27	Fiji (S17.40°, E178.24°)	PP117980		PP118641		PP156456	
<i>Scytodes fusca</i>	Scytodidae	356	Hap27	Fiji (S17.84°, E178.26°)	PP133134		PP130679		PP156505	
<i>Scytodes fusca</i>	Scytodidae	361	Hap28	SriLanka (N6.62°, E80.87°)	PP117981	PP118730	PP118642	PP118800	ON507162	
<i>Scytodes fusca</i>	Scytodidae	373	Hap29	China, Yunnan	PP117982					
<i>Scytodes fusca</i>	Scytodidae	377	Hap30	Philippines (N17.71°, E121.82°)	PP117983		PP118644		ON507168	PP118887
<i>Scytodes fusca</i>	Scytodidae	381	Hap31	Philippines (N17.71°, E121.82°)	PP117984		PP118645	PP118801	ON507169	PP118888
<i>Scytodes fusca</i>	Scytodidae	383	Hap32	Philippines (N17.08°, E120.97°)	PP117985	PP118731	PP118646		ON507171	PP118889
<i>Scytodes fusca</i>	Scytodidae	408	Hap40	Thailand (N8.02°, E99.58°)	PP117986		PP118647	PP118802	ON507182	PP118890

<i>Scytodes fusca</i>	Scytodidae	409	Hap33	Thailand (N7.59°, E99.67°)	PP117987		PP118648		ON507183	PP118891
<i>Scytodes fusca</i>	Scytodidae	411	Hap40	Thailand (N8.40°, E98.72°)	PP117988		PP118649	PP118803	ON507184	PP118892
<i>Scytodes fusca</i>	Scytodidae	412	Hap40	Thailand (N8.05°, E99.73°)	PP117989		PP118650	PP118804	ON507185	PP118893
<i>Scytodes fusca</i>	Scytodidae	414	Hap40	Thailand (N8.04°, E99.75°)	PP133135		PP130680	PP130702	ON507187	PP130717
<i>Scytodes fusca</i>	Scytodidae	415	Hap34	Thailand (N2.45°, E100.13°)	PP133136		PP130681	PP130703	ON507188	PP130718
<i>Scytodes fusca</i>	Scytodidae	420	Hap34	Thailand (N2.45°, E100.13°)	PP117990	PP118732	PP118651	PP118805	ON507191	PP118894
<i>Scytodes fusca</i>	Scytodidae	421	Hap35	Thailand (N6.27°, E101.25°)	PP117991	PP118733	PP118652	PP118806	ON507192	PP118895
<i>Scytodes fusca</i>	Scytodidae	422	Hap36	Thailand (N7.15°, E99.80°)	PP117992	PP118734	PP118653	PP118807	ON507193	
<i>Scytodes fusca</i>	Scytodidae	423	Hap37	Thailand (N7.07°, E100.25°)	PP117993				ON507194	
<i>Scytodes fusca</i>	Scytodidae	428	Hap38	Thailand (N7.64°, E100.08°)	PP117994		PP118654	PP118808	ON507195	PP118896
<i>Scytodes fusca</i>	Scytodidae	429	Hap39	Thailand (N6.20°, E101.19°)	PP117995	PP118735	PP118655		ON507196	PP118897
<i>Scytodes fusca</i>	Scytodidae	432	Hap40	Thailand (N8.34°, E98.75°)	PP117996		PP118656	PP118809	ON507198	PP118898
<i>Scytodes fusca</i>	Scytodidae	434	Hap41	Cuba, Granma (N20.05°, W76.92°)	PP117997		PP118657	PP118810	PP156458	PP118899
<i>Scytodes fusca</i>	Scytodidae	438	Hap62	Thailand (N13.65°, E99.74°)	PP117998	PP118736	PP118658		ON507199	
<i>Scytodes fusca</i>	Scytodidae	439	Hap62	Thailand (N13.65°, E99.74°)	PP133137	PP130659	PP130682		ON507200	
<i>Scytodes fusca</i>	Scytodidae	445	Hap42	Saint Lucia (N13.29°, W61.25°)		PP118737	PP118659	PP118811	PP156459	
<i>Scytodes fusca</i>	Scytodidae	455	Hap65	Madagascar (S12.97°, E49.14°)	PP117999	PP118738	PP118660	PP118812	PP156460	
<i>Scytodes fusca</i>	Scytodidae	457	Hap65	Madagascar (S12.27°, E49.39°)	PP133138	PP130660	PP130683	PP130704	PP156509	
<i>Scytodes fusca</i>	Scytodidae	458	Hap62	Indonesia, Borneo (S3.76°, E114.61°)	PP118000	PP118739	PP118661		ON507206	
<i>Scytodes fusca</i>	Scytodidae	471	Hap62	Indonesia, Sulawesi (S5.00°, E119.66°)	PP133139	PP130661	PP130684		ON507215	
<i>Scytodes fusca</i>	Scytodidae	485	Hap62	Thailand (N17.58°, E101.89°)	PP133140	PP130662	PP130685		ON507225	
<i>Scytodes fusca</i>	Scytodidae	487	Hap65	Thailand (N16.67°, E101.90°)	PP133141	PP130663	PP130686	PP130705	ON507227	
<i>Scytodes fusca</i>	Scytodidae	496	Hap62	Thailand (N16.60°, E101.09°)	PP133142	PP130664	PP130687		ON507234	
<i>Scytodes fusca</i>	Scytodidae	500	Hap43	Thailand (N17.58°, E101.71°)	PP118002	PP118741	PP118663		ON507236	
<i>Scytodes fusca</i>	Scytodidae	502	Hap62	Thailand (N13.40°, E102.24°)	PP133143	PP130665	PP130688		ON507238	
<i>Scytodes fusca</i>	Scytodidae	503	Hap65	Thailand (N14.67°, E101.01°)	PP118003	PP118742	PP118664	PP118814	ON507239	
<i>Scytodes fusca</i>	Scytodidae	507	Hap62	America (N13.87°, W60.92°)	PP118004	PP118743	PP118665		PP156464	

<i>Scytodes fusca</i>	Scytodidae	508	Hap44	America (N15.34°, W61.33°)	PP118005		PP118666	PP118815	PP156465	
<i>Scytodes fusca</i>	Scytodidae	509	Hap65	America (N28.32°, W80.83°)	PP133144	PP130666	PP130689	PP130706	PP156515	
<i>Scytodes fusca</i>	Scytodidae	511	Hap45	America (N28.32°, W80.83°)	PP118006	PP118744	PP118667	PP118816	PP156466	
<i>Scytodes fusca</i>	Scytodidae	512	Hap46	America (N25.09°, W80.45°)	PP118007	PP118745		PP118817	PP156467	
<i>Scytodes fusca</i>	Scytodidae	513	Hap47	America (N25.20°, W81.37°)	PP118008		PP118668		PP156468	
<i>Scytodes fusca</i>	Scytodidae	514	Hap48	Mexico (N20.55°, W89.91°)	PP118009		PP118669		PP156469	
<i>Scytodes fusca</i>	Scytodidae	520	Hap49	Guadeloupe, Grande Terre (N16.48°, W61.43°)	PP118011	PP118746	PP118672	PP118820	PP156472	
<i>Scytodes fusca</i>	Scytodidae	526	Hap50	Cuba, Granma (N16.48°, W61.43°)	PP118012	PP118747	PP118673	PP118821	PP156473	
<i>Scytodes fusca</i>	Scytodidae	528	Hap52	Turks and Caicos (N21.49°, W71.53°)	PP118014	PP118749	PP118675	PP118823	PP156475	
<i>Scytodes fusca</i>	Scytodidae	536	Hap51	Mexico (N19.54°, W88.05°)	PP118016	PP118751	PP118678	PP118826	PP156478	
<i>Scytodes fusca</i>	Scytodidae	537	Hap52	Turks and Caicos (N21.49°, W71.53°)	PP133145	PP130667	PP130690	PP130707	PP156516	
<i>Scytodes fusca</i>	Scytodidae	540	Hap53	Costa Rica (N9.85°, W83.60°)	PP118018	PP118752		PP118828	PP156480	
<i>Scytodes fusca</i>	Scytodidae	543	Hap54	St. Eustatius (N17.48°, W62.82°)	PP118019	PP118753	PP118680	PP118829	PP156481	PP118903
<i>Scytodes fusca</i>	Scytodidae	544	Hap55	St. Vincent (N13.15°, W61.17°)	PP118020		PP118681	PP118830	PP156482	PP118904
<i>Scytodes fusca</i>	Scytodidae	545	Hap56	Dominica (N15.34°, W61.33°)	PP118021	PP118754	PP118682	PP118831	PP156483	
<i>Scytodes fusca</i>	Scytodidae	546	Hap57	Everglades (N28.32°, W80.83°)	PP118022	PP118755	PP118683	PP118832	PP156484	PP118905
<i>Scytodes fusca</i>	Scytodidae	547	Hap58	Everglades (N28.32°, W80.83°)	PP118023	PP118756	PP118684	PP118833	PP156485	
<i>Scytodes fusca</i>	Scytodidae	548	Hap65	Everglades (N25.09°, W80.45°)	PP133146	PP130668	PP130691	PP130708	PP156517	
<i>Scytodes fusca</i>	Scytodidae	549	Hap59	Everglades (N28.32°, W80.83°)	PP118024	PP118757	PP118685	PP118834	PP156486	PP118906
<i>Scytodes fusca</i>	Scytodidae	550	Hap64	Everglades (N25.20°, W81.37°)	PP118025	PP118758	PP118686	PP118835	PP156487	
<i>Scytodes fusca</i>	Scytodidae	551	Hap60	Everglades (N25.15°, W81.92°)	PP118026	PP118759	PP118687	PP118836	PP156488	
<i>Scytodes fusca</i>	Scytodidae	553	Hap61	Mexico (N20.55°, W89.91°)	PP118028		PP118689	PP118838	PP156490	
<i>Scytodes fusca</i>	Scytodidae	556	Hap64	Everglades (N25.18°, W80.90°)	PP133147	PP130669	PP130692	PP130709	PP156518	
<i>Scytodes fusca</i>	Scytodidae	568	Hap62	Costa Rica (N10.10°, W84.12°)	PP133148	PP130670	PP130693		PP156519	
<i>Scytodes fusca</i>	Scytodidae	570	Hap63	Jamaica (N18.44°, W77.59°)	PP118031	PP118764	PP118695	PP118843	PP156495	
<i>Scytodes fusca</i>	Scytodidae	577	Hap65	Saba (N17.64°, W63.23°)	PP133149	PP130671	PP130694	PP130710	PP156520	
<i>Scytodes fusca</i>	Scytodidae	580	Hap65	Dominica (N15.50°, W61.47°)	PP133150	PP130672	PP130695	PP130711	PP156521	

<i>Scytodes fusca</i>	Scytodidae	583	Hap64	Dominica (N15.30°, W61.38°)	PP133151	PP130673	PP130696	PP130712	PP156522	
<i>Scytodes fusca</i>	Scytodidae	585	Hap65	Grenadnes Union Island (N12.60°, W61.44°)	PP133152	PP130674	PP130697	PP130713	PP156523	
<i>Scytodes fusca</i>	Scytodidae	588	Hap65	Dominica (N15.58°, W61.47°)	PP133153	PP130675	PP130698	PP130714	PP156524	
<i>Scytodes fusca</i>	Scytodidae	590	Hap65	Grenadnes Union Island (N12.52°, W61.45°)	PP133154	PP130676	PP130699	PP130715	PP156525	
<i>Scytodes fusca</i>	Scytodidae	591	Hap65	Dominica (N15.58°, W61.47°)	PP133155	PP130677	PP130700	PP130716	PP156526	
<i>Scytodes fusca</i>	Scytodidae	592	Hap66	Cuba, Granma (N20.05°, W76.92°)			PP118701		PP156501	
<i>Scytodes fusca</i>	Scytodidae	593	Hap67	Mexico (N19.19°, W96.16°)	PP118035	PP118766	PP118702	PP118849		
<i>Scytodes fusca</i>	Scytodidae	595	Hap68	Cuba, Granma (N20.05°, W76.92°)	PP118036	PP118767	PP118703	PP118850	PP156502	
<i>Scytodes fusca</i>	Scytodidae	(600) B59	Hap69	Mexico (N20.55°, W89.91°)	PP118037		PP118704	PP118851	PP156503	
<i>Scytodes fusca</i>	Scytodidae	GJB-2008	Hap70	Mexico, Baja, Rosaria				EU817725*		
<i>Scytodes fusca</i>	Scytodidae	VAQT798-10	Hap71	Australia (S19.29°, E146.80°)	HQ986494*					
<i>Scytodes fusca</i>	Scytodidae	sc_05457	Hap72	French Polynesia (S16.82°, W151.42°)	KX054733*					
<i>Scytodes fusca</i>	Scytodidae	CASENT9023800	Hap73	Madagascar	KX514651*		KX5114553*	KX514594*	KX298918*	
<i>Scytodes fusca</i>	Scytodidae	AA_532	Hap74	India (N22.81°, E88.53°)	MK393114*					
<i>Scytodes</i> sp. 2	Scytodidae	384		Philippines (N17.11°, E120.94°)	ON493315	ON507533	ON490713	ON507685	ON507172	ON507380
<i>Scytodes</i> sp. 3	Scytodidae	385		Philippines (N14.86°, E121.09°)	ON493316		ON490714	ON507686	ON507173	ON507381
<i>Scytodes</i> sp. 2	Scytodidae	386		Philippines (N17.09°, E120.91°)	ON493317	ON507534	ON490715	ON507687	ON507174	ON507382
<i>Scytodes</i> sp. 4	Scytodidae	323		Indonesia, Sumatra (S7.94°, E110.44°)	ON493289	ON507517	ON490688	ON507667	ON507152	ON507368
<i>Scytodes</i> sp. 4	Scytodidae	406		Thailand (N6.53°, E101.23°)	ON493325	ON507539	ON490724	ON507692	ON507182	ON507388
<i>Scytodes</i> sp. 4	Scytodidae	378		Philippines (N17.71°, E121.82°)	ON493310	ON507530	ON490707	ON507681	ON507169	ON507375
<i>Scytodes</i> sp. 4	Scytodidae	379		Philippines (N15.26°, E120.56°)			ON490708			
<i>Scytodes</i> sp. 4	Scytodidae	380		Philippines (N17.71°, E121.82°)	ON493311	ON507531	ON490709	ON507682		ON507376

Supplementary Table S3 Samples of the Himalayas group of *Scytodes*: taxon name, specimen voucher, sample collection locality with coordinates, and GenBank accession numbers.

Taxon	Family	Voucher	Locality	<i>cox1</i>	16s	18s	28s	<i>h3</i>	ITS2
<i>Scytodes</i> sp. 48	Scytodidae	204	China, Xizang (N29.70°, E94.73°)	ON493234	ON507472		ON507623	ON507099	ON507318
<i>Scytodes</i> sp. 48	Scytodidae	205	China, Xizang (N29.68°, E94.70°)	ON493235	ON507473	ON490632	ON507624	ON507100	ON507319
<i>Scytodes</i> sp. 48	Scytodidae	206	China, Xizang (N29.64°, E94.37°)	ON493236	ON507474	ON490633	ON507625	ON507101	ON507320
<i>Scytodes</i> sp. 50	Scytodidae	207	China, Xizang (N30.27°, E94.78°)	ON493237	ON507475	ON490634	ON507626		ON507321
<i>Scytodes</i> sp. 49	Scytodidae	208	China, Xizang (N29.85°, E95.74°)	ON493238	ON507476	ON490635	ON507627	ON507102	ON507322
<i>Scytodes</i> sp. 49	Scytodidae	209	China, Xizang (N29.84°, E95.76°)	ON493239	ON507477	ON490636	ON507628	ON507103	ON507323
<i>Scytodes</i> sp. 51	Scytodidae	210	China, Xizang (N28.65°, E97.45°)	ON493240	ON507478	ON490637	ON507629	ON507104	ON507324
<i>Scytodes</i> sp. 51	Scytodidae	211	China, Xizang (N28.63°, E97.41°)	ON493241	ON507479	ON490638		ON507105	ON507325
<i>Scytodes</i> sp. 51	Scytodidae	212	China, Xizang (N28.61°, E97.28°)	ON493242	ON507480	ON490639	ON507630	ON507106	ON507326
<i>Scytodes</i> sp. 52	Scytodidae	213	China, Xizang (N29.08°, E93.15°)		ON507481	ON490640	ON507631	ON507107	ON507327
<i>Scytodes</i> sp. 52	Scytodidae	214	China, Xizang (N29.71°, E94.73°)	ON493243	ON507482	ON490641	ON507632		ON507328
<i>Scytodes</i> sp. 53	Scytodidae	215	China, Xizang (N29.37°, E94.41°)	ON493244	ON507483	ON490642		ON507108	ON507329
<i>Scytodes</i> sp. 54	Scytodidae	216	China, Xizang (N28.11°, E91.11°)	ON493245	ON507484	ON490643	ON507633	ON507109	ON507330
<i>Scytodes</i> sp. 59	Scytodidae	217	China, Yunnan (N24.83°, E98.77°)	ON493246	ON507485	ON490644	ON507634	ON507110	ON507331
<i>Scytodes</i> sp. 58	Scytodidae	283	Thailand (N18.81°, E98.90°)						ON507344
<i>Scytodes</i> sp. 58	Scytodidae	284	Thailand (N18.81°, E98.90°)	ON493264	ON507492	ON490659	ON507644	ON507126	ON507345
<i>Scytodes</i> sp. 58	Scytodidae	285	Thailand (N18.81°, E98.90°)	ON493265	ON507493	ON490660	ON507645	ON507127	ON507346
<i>Scytodes</i> sp. 59	Scytodidae	291_1	China, Yunnan (N25.30°, E98.76°)	ON493271	ON507498	ON490666	ON507651	ON507133	ON507353
<i>Scytodes</i> sp. 59	Scytodidae	291_2	China, Yunnan (N25.30°, E98.76°)	ON493272	ON507499	ON490667		ON507134	
<i>Scytodes</i> sp. 59	Scytodidae	292	China, Yunnan (N25.30°, E98.76°)	ON493273	ON507500	ON490668		ON507135	
<i>Scytodes</i> sp. 58	Scytodidae	302	Thailand (N18.51°, E98.50°)		ON507505	ON490675		ON507142	ON507358
<i>Scytodes</i> sp. 58	Scytodidae	303	Thailand (N18.53°, E98.52°)			ON490676			ON507359

<i>Scytodes</i> sp. 58	Scytodidae	307	Thailand (N18.81°, E98.91°)	ON493282	ON507508	ON490679	ON507659	ON507144	ON507360
<i>Scytodes</i> sp. 58	Scytodidae	316	Thailand (N18.82°, E98.89°)		ON507513	ON490684	ON507664	ON507148	ON507365
<i>Scytodes</i> sp. 58	Scytodidae	319	Thailand (N18.81°, E98.91°)		ON507514	ON490685	ON507665	ON507149	ON507366
<i>Scytodes</i> sp. 55	Scytodidae	365	Myanmar (N27.39°, E97.15°)	ON493305	ON507526	ON490702	ON507678		
<i>Scytodes</i> sp. 60	Scytodidae	424	China, Yunnan (N24.11°, E101.85°)				ON507704		
<i>Scytodes</i> sp. 59	Scytodidae	444	China, Yunnan (N24.93°, E98.78°)	ON493347	ON507554	ON490747	ON507712	ON507202	
<i>Scytodes</i> sp. 59	Scytodidae	446	China, Yunnan (N24.83°, E98.77°)	ON493348	ON507555	ON490748	ON507713	ON507203	
<i>Scytodes</i> sp. 56	Scytodidae	450	Myanmar (N27.47°, E97.22°)	ON493351	ON507558	ON490751		ON507204	
<i>Scytodes</i> sp. 56	Scytodidae	454	Myanmar (N27.54°, E97.03°)	ON493354	ON507561	ON490753	ON507714	ON507205	
<i>Scytodes</i> sp. 57	Scytodidae	459	Myanmar (N27.54°, E97.03°)	ON493356	ON507563	ON490755	ON507715	ON507207	
<i>Scytodes</i> sp. 56	Scytodidae	465	Myanmar (N27.44°, E97.24°)	ON493358	ON507567	ON490760		ON507211	
<i>Scytodes</i> sp. 54	Scytodidae	466	China, Xizang (N27.95°, E91.82°)	ON493359	ON507568	ON490761	ON507719	ON507212	
<i>Scytodes</i> sp. 54	Scytodidae	468	China, Xizang (N27.42°, E88.95°)	ON493360		ON490762	ON507720	ON507213	
<i>Scytodes</i> sp. 54	Scytodidae	474	China, Xizang (N27.51°, E88.96°)	ON493363		ON490766	ON507723	ON507217	
<i>Scytodes</i> sp. 54	Scytodidae	480	China, Xizang (N27.81°, E91.76°)	ON493366	ON507572	ON490770	ON507726	ON507221	
<i>Scytodes</i> sp. 59	Scytodidae	489	China, Yunnan (N25.29°, E98.80°)	ON493372		ON490777		ON507228	
<i>Scytodes</i> sp. 59	Scytodidae	604	China, Yunnan (N24.93°, E98.78°)	ON493382					

Supplementary Table S4 Primer sequences and annealing temperatures used in this study.

Gene	Primer code	Primer sequence	Annealing temperature (°C)	Reference
COI	LCOI1490	5'-GGTCAACAAATCATAAAGATATTGG-3'		Folmer et al., 1994
	HCOI2198	5'-TAAACTTCAGGGTGACCAAAAAATCA-3'	45–51	Folmer et al., 1994
	C1-N-2776	5'-GGATAATCAGAATATCGTCGAGG-3'		Hedin & Maddison, 2001
H3	H3aF	5'-ATGGCTCGTACCAAGCAGACVGC-3'	53	Colgan et al., 1998
	H3aR	5'-ATATCCTTRGGCATRATRGTGAC-3'		Colgan et al., 1998
16S	16SF	5'-CTAAGGTAGCATAATCA-3'	45	Agnarsson et al., 2007
	16SR	5'-ATGATCATCCAATTGAT-3'		Agnarsson et al., 2007
18S	5F	5'-CCAGCAGCCGCGCTAATTC-3'	52	Giribet et al., 1996
	9R	5'-GATCCTTCCGCAGGTTACCTAC-3'		Giribet et al., 1999
28S	28S"O"	5'-GAAACTGCTCAAAGGTTAAACGG-3'	55	Hedin & Maddison, 2001
	28S"C"	5'-GGTTCGATTAGTCTTTTCGCG-3'		Hedin & Maddison, 2001
ITS2	CAS5p8SFC	5'-TGAACATCGACATTTYGAACGCACAT-3'	48	Ji et al., 2003
	CAS28SB1d	5'-TTCTTTCCSCTTAYTRATATGCTTAA-3'		Ji et al., 2003

Supplementary references

- Agnarsson I, Maddison WP, Aviles L. 2007. The phylogeny of the social *Anelosimus* spiders (Araneae: Theridiidae) inferred from six molecular loci and morphology. *Molecular Phylogenetics and Evolution*, **43**: 833–851.
- Colgan DJ, McLauchlan A, Wilson GDF, et al. 1998. Histone H3 and U2 snRNA DNA sequences and arthropod molecular evolution. *Australian Journal of Zoology*, **46**: 419–437.
- Folmer O, Black M, Hoeh W, et al. 1994. DNA primers for amplification of mitochondrial cytochrome oxidase subunit I from diverse metazoan invertebrates. *Molecular Marine Biology and Biotechnology*, **3**: 294–299.
- Giribet G, Carranza S, Riutort M, et al. 1999. Internal phylogeny of the Chilopoda (Myriapoda, Arthropoda) using complete 18S rDNA and partial 28S rDNA sequences. *Philosophical transactions-Royal Society. Biological sciences*, **354**: 215–222.
- Hedin MC, Maddison WP. 2001. A combined molecular approach to phylogeny of the jumping spider subfamily Dendryphantinae (Araneae: Salticidae). *Molecular Phylogenetics and Evolution*, **18**: 386–403.
- Ji YJ, Zhang DX, He LJ. 2003. Evolutionary conservation and versatility of a new set of primers for amplifying the ribosomal internal transcribed spacer regions in insects and other invertebrates. *Molecular Ecology Notes*, **3**: 581–585.

Supplementary Table S5 The best-fitting substitution models for each gene partition or codon base used in the ML analyses were determined across all available models in IQ-tree.

gene/codon	model		
	the multiple individuals of each <i>Scytodes</i> species	a single specimen represented in each <i>Scytodes</i> species	the <i>thoracica</i> group
16S	TIM2+F+I+G4	GTR+F+I+G4	TIM2+F+I+G4
18S	TIM2e+I+G4	TIM2e+I+G4	TIM2e+I+G4
28S	GTR+F+I+G4	GTR+F+I+G4	GTR+F+I+G4
ITS2	TVM+F+R3	TPM3u+F+I+G4	TPM3u+F+I+G4
<i>COI-1</i>	GTR+F+I+G4	GTR+F+I+G4	GTR+F+I+G4
<i>COI-2</i>	GTR+F+I+G4	GTR+F+I+G4	GTR+F+I+G4
<i>COI-3</i>	HKY+F+I+G4	HKY+F+I+G4	HKY+F+I+G4
<i>H3-1</i>	TIM2+F+G4	TIM2+F+G4	TIM2+F+G4
<i>H3-2</i>	K2P	K2P	K2P
<i>H3-3</i>	TIM2e+G4	TIM2e+G4	TIM2e+G4

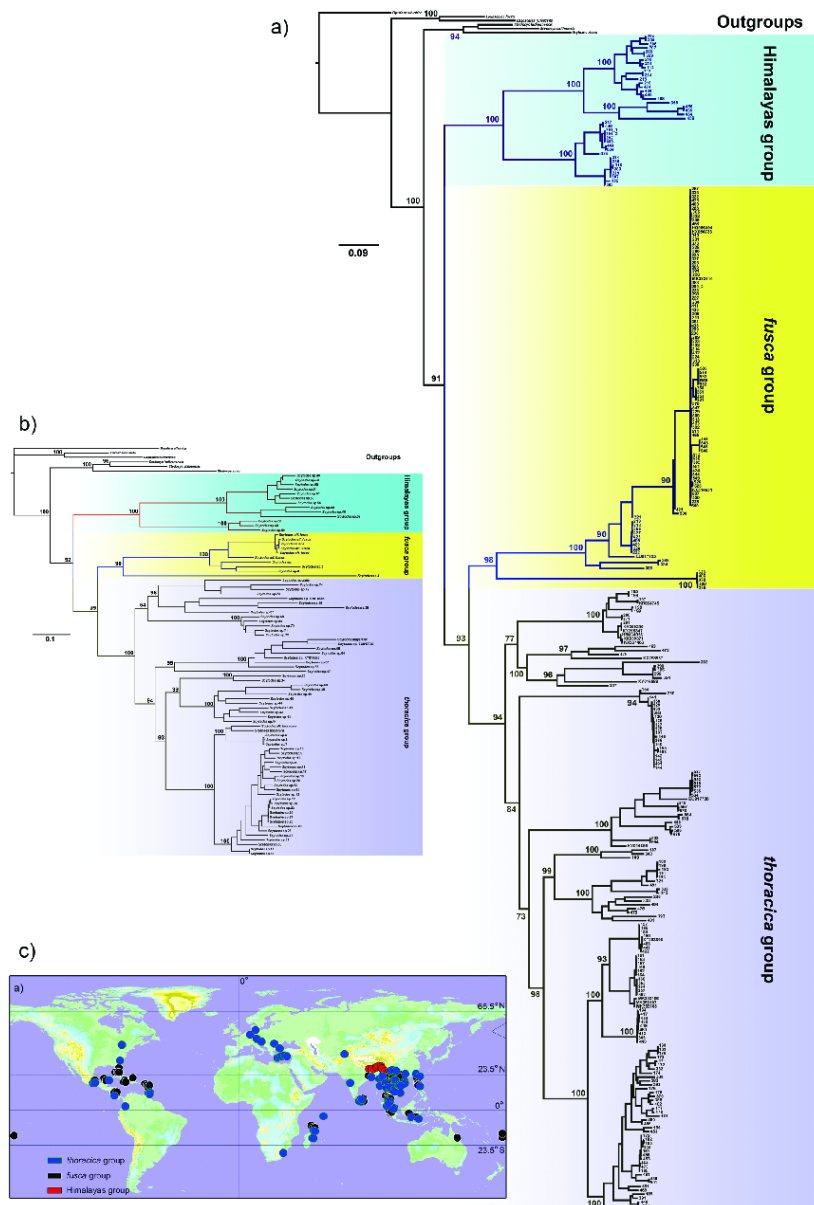
Supplementary Table S6 Parameters of the best-fitting substitution model for each codon base or gene partition selected under the Akaike information criterion (AIC) used in the BI analyses. *COI-1*, *COI-2* and *COI-3* represent the first, second and third base of each codon of *COI* gene, respectively; *H3-1*, *H3-2* and *H3-3* represent the first, second and third base of each codon of *H3* gene, respectively.

gene/codon	model	partition	-lnL	p	AIC	deltaAIC	weight	cumweight
16S	GTR+I+G	012345	7936.4904	320	16512.9808	0.0	0.9999	1
18S	GTR+I+G	012345	3159.3336	320	6958.6672	0.0	0.777	0.777
28S	GTR+I+G	012345	8393.843	320	17427.686	0.0	0.9985	0.999
ITS2	GTR+I+G	012345	5266.9991	320	11173.9982	0.0	1.0	1
<i>COI-1</i>	GTR+I+G	012345	2210.5619	320	5061.1238	0.0	0.9996	1
<i>COI-2</i>	GTR+I+G	012345	854.5717	320	2349.1433	0.0	0.9997	1
<i>COI-3</i>	GTR+I+G	012345	8638.7498	320	17917.4996	0.0	0.998	0.998
<i>H3-1</i>	GTR+G	012345	418.8975	319	1475.795	0.0	0.5872	0.587
<i>H3-2</i>	JC	000000	157.3143	310	934.6286	0.0	0.3233	0.323
<i>H3-3</i>	GTR+G	012345	3192.5961	319	7023.1923	0.0	0.6667	0.667

Supplementary Table S7 The details and assignments of the fossil calibration points used in BEAST analyses.

Taxa		BEAST			MCMC		
		Distribution	Mean	Stdev	Offset	Minimum	Maximum
Segestriidae + Dysderidae	crown	logNormal	1	0.6	125	125	135
Dysderidae	crown	logNormal	2	0.7	35	35	65
<i>Scytodes</i>	stem	logNormal	2	0.3	33.9	33.9	58
<i>Loxosceles</i>	stem	logNormal	2	1.2	13.82	13.82	95

Notes: The time units of all parameters were set in million years.



Supplementary Figure S1 Global phylogeny and lineage distributions of *Scytodes*. We reconstructed the ML phylogenetic trees using both the multiple individuals of each species and a single specimen represented in each species. a: Phylogenetic tree of 285 individuals of 84 *Scytodes* species worldwide inferred from ML analyses of the concatenated mitochondrial (*COI* and 16S) and nuclear (18S, 28S, ITS2, and *H3*) data sets; b: Phylogenetic tree of 84 globally distributed *Scytodes* species constructed using ML based on the combined data sets. Numbers near branches are bootstrap values from likelihood analyses; c: Sampling sites of all analysed *Scytodes*, including the *thoracica* group (blue circles), the *fusca* group (black circles) and the Himalayas group (red circles). The site names are given in the Supplementary Tables S1– S3.