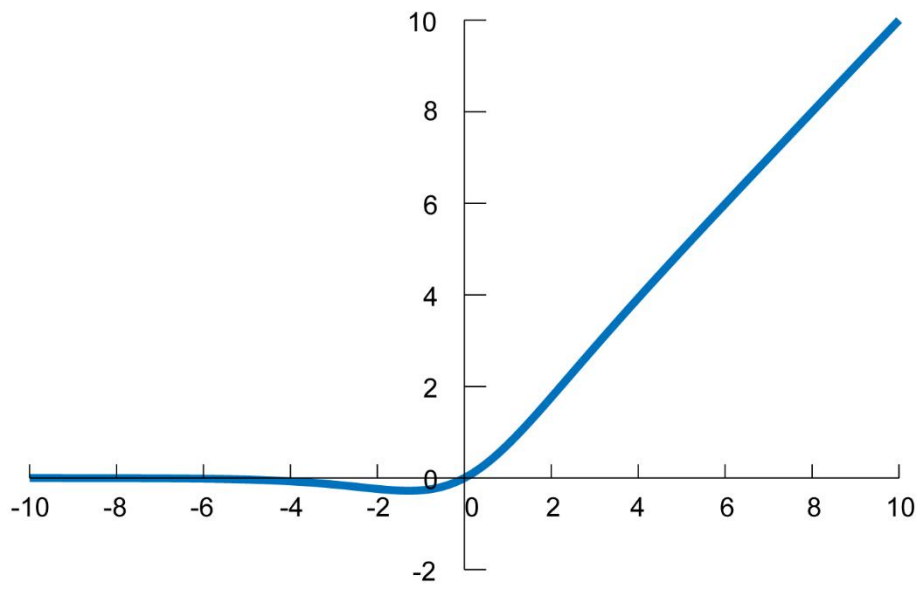
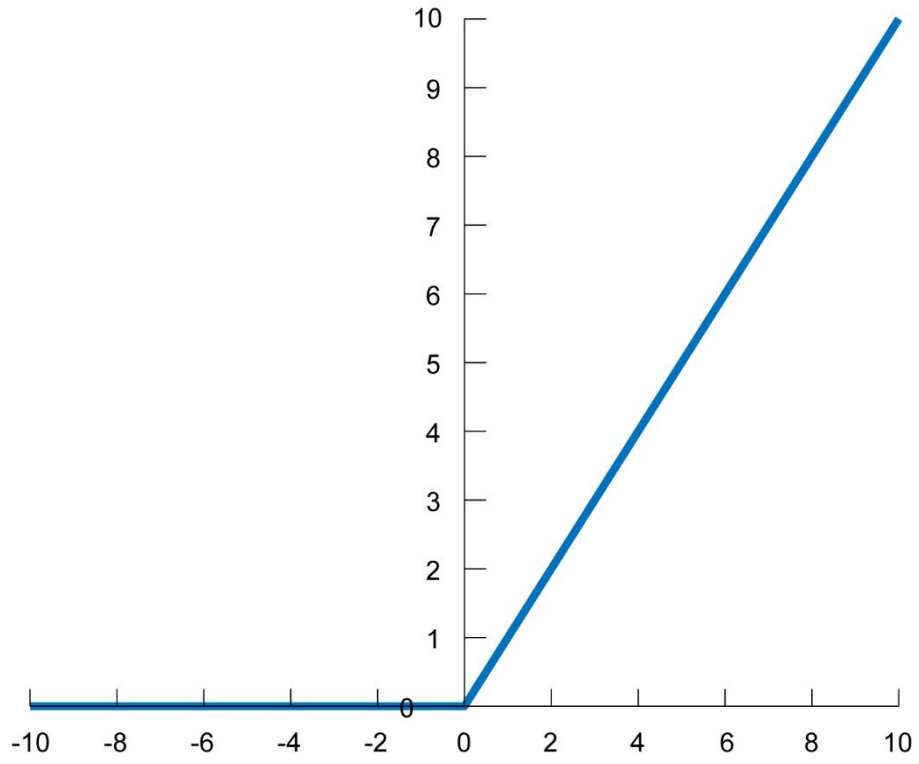


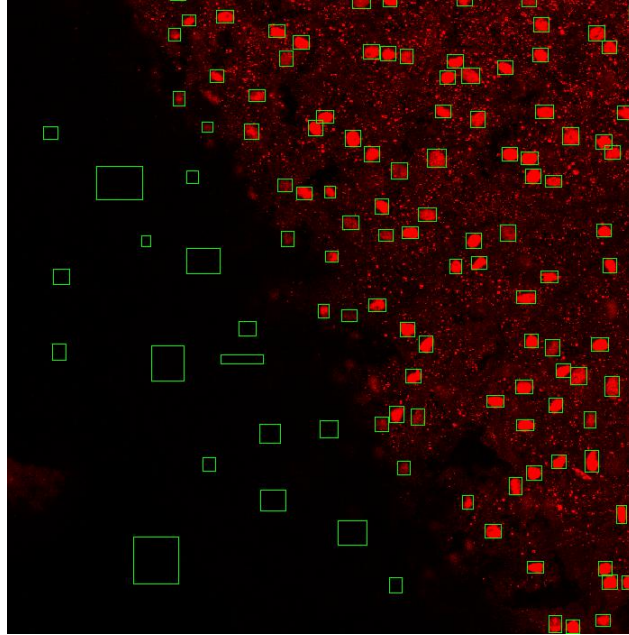
Supplementary Materials



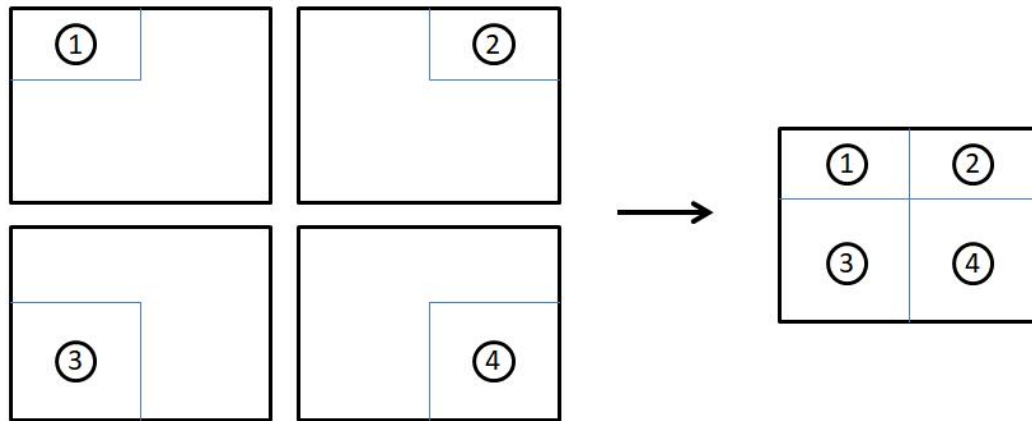
Supplementary Figure S1 SiLU function.



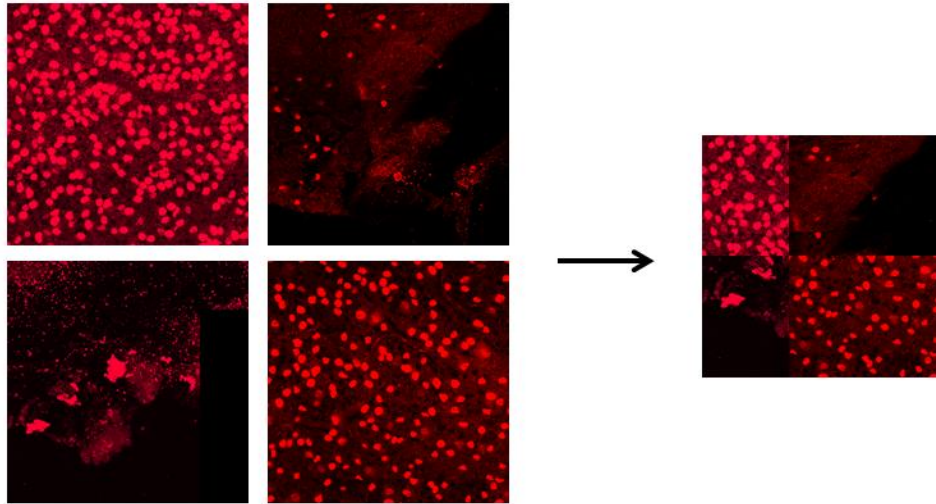
Supplementary Figure S2 ReLU function.



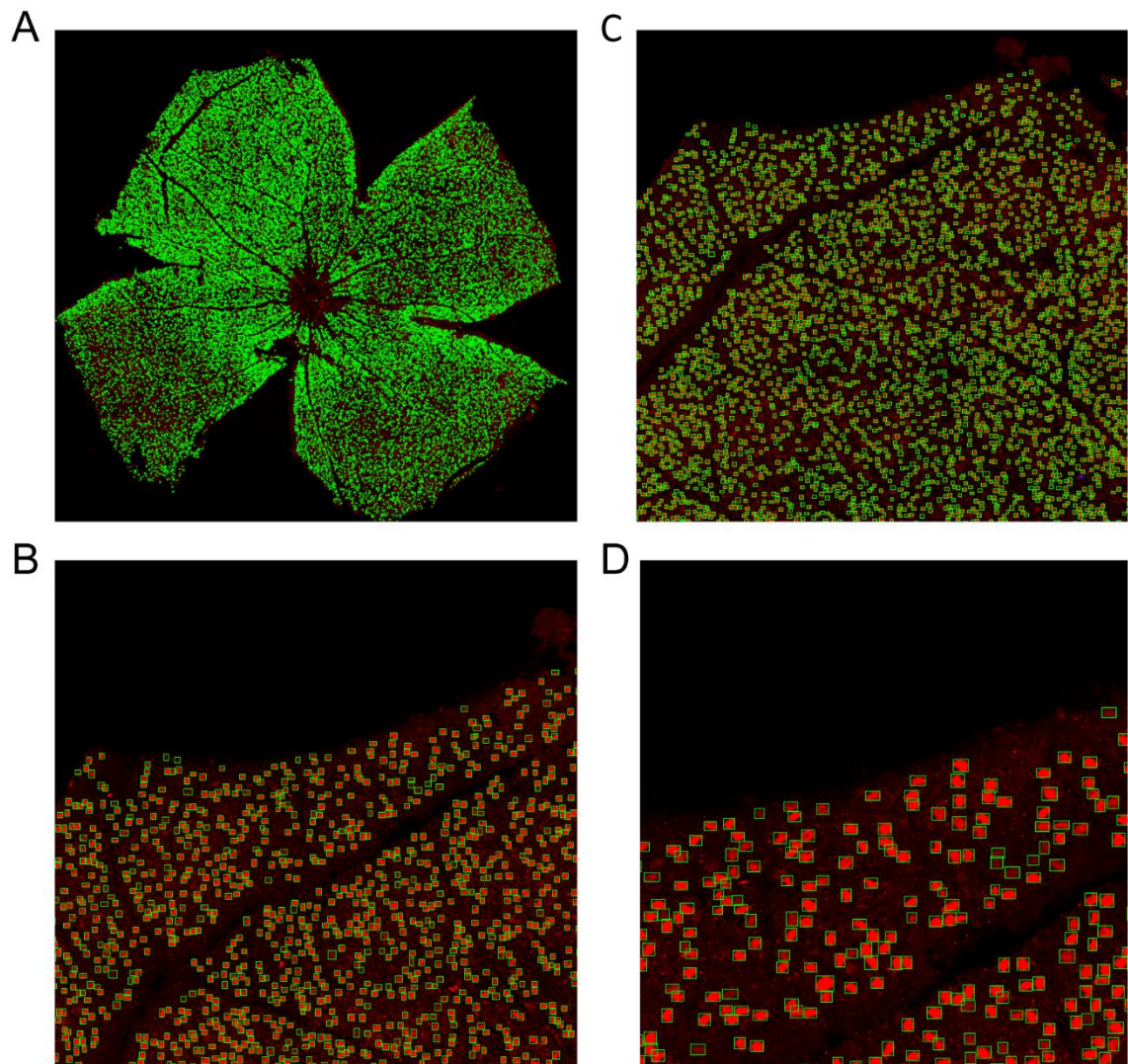
Supplementary Figure S3 Preliminary experimental results. During method development, we found that not adding background pictures led to a high false detection rate of retinal edge.



Supplementary Figure S4 Mosaic enhancement. Four images were randomly taken from the dataset. A section was cut from each image according to the random proportion, allowing the cut sections to be synthesized into one image of the same size.



Supplementary Figure S5 Example of mosaic enhancement using actual images.



Supplementary Figure S6 Images with different zoom sizes. A: Labeled whole-retinal image. B, C, D: Labeled retinal images showing 1/16 (C), 1/64 (B), and 1/256 (D) of original image area, respectively.