

Supplementary Tables and Figures

Supplementary Figures

CENTERFO
RBIOLOGI
CALSEQU
ENCEANA
LYSIS CBS

SecretomeP 2.0a Server - prediction results

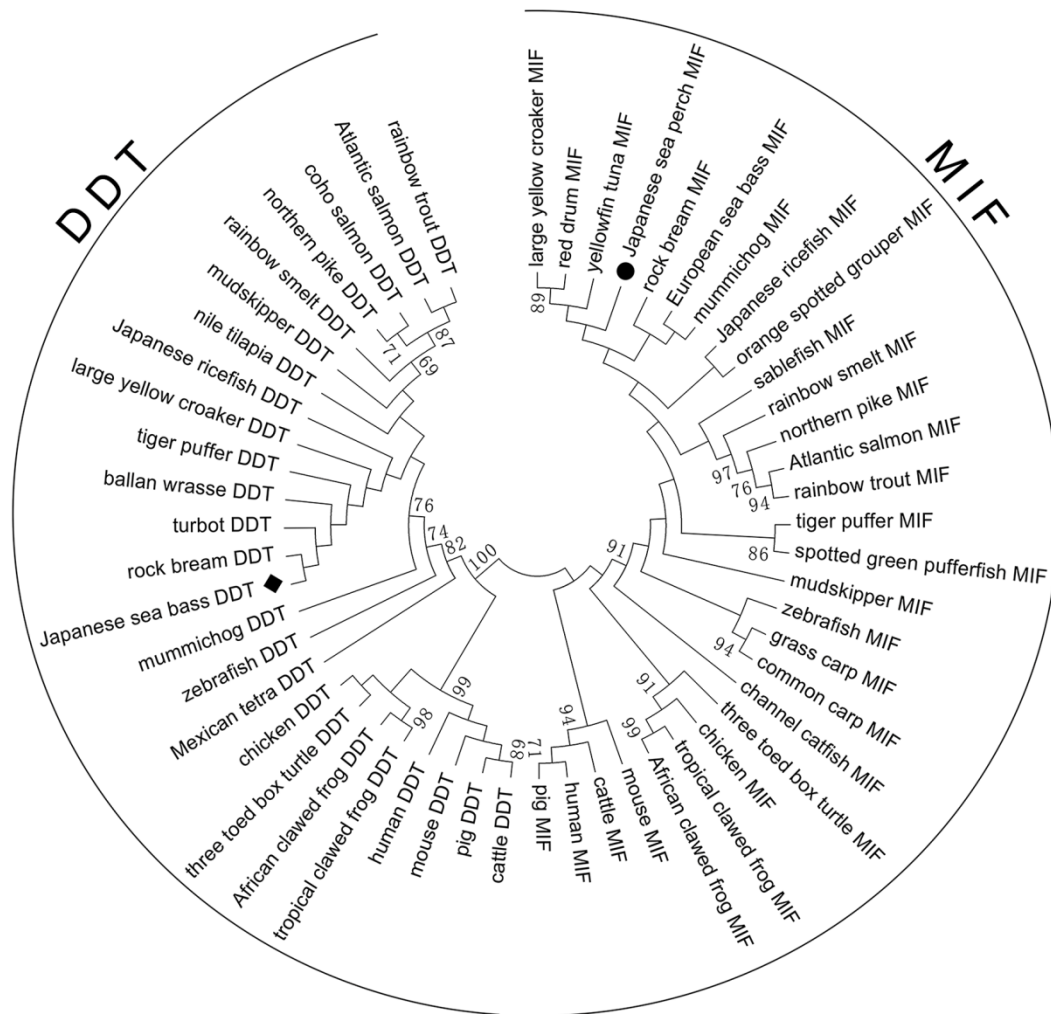
Technical University of Denmark

Non-classically secreted proteins should obtain an NN-score / SecP score exceeding the threshold, but not at the same time be predicted to contain a signal peptide.
The recommended thresholds are **0.5** for bacterial sequences and **0.6** for mammalian sequences.

```
# SecretomeP 1.0f predictions
# Name      NN-score Odds  Weighted  Warning
#           NN-score Odds  by prior
# =====
Sequence    0.635  1.941  0.004    -
# =====
```

[Explain](#) the output. Go [back](#).

Supplementary Figure S1 Prediction of non-classical protein secretion by the SecretomeP 2.0 server



Supplementary Figure S2 Phylogenetic tree analysis of amino acid sequences of DDTs and MIFs using the neighbor-joining method (poisson model) of MEGA 7.0

The site of Japanese sea bass DDT and MIF are marked with “♦” and “●” respectively. The values at the forks indicate the percentage of trees in which this grouping occurred after bootstrapping (1 000 replicates; shown only when >60%). The scale bar shows the number of substitutions per base. GenBank accession Nos. of sequences used are listed in Supplementary Table S1.

Supplementary Tables

Supplementary Table S1 *DDT* and *MIF* sequences used for multiple sequence alignment and phylogenetic tree analysis

GenBank	accession	Species		Gene
No.		Latin name	English name	
MH988689		<i>Lateolabrax japonicus</i>	Japanese sea bass	<i>DDT</i>
XM_010746837		<i>Larimichthys crocea</i>	large yellow croaker	<i>DDT</i>
XM_012851051		<i>Fundulus heteroclitus</i>	mummichog	<i>DDT</i>
BT075369		<i>Osmerus mordax</i>	rainbow smelt	<i>DDT</i>
BC071391		<i>Danio rerio</i>	zebrafish	<i>DDT</i>
XM_010904924		<i>Esox lucius</i>	northern pike	<i>DDT</i>
XM_003456548		<i>Oreochromis niloticus</i>	Nile tilapia	<i>DDT</i>
XM_011478667		<i>Oryzias latipes</i>	Japanese ricefish	<i>DDT</i>
BT049054		<i>Salmo salar</i>	Atlantic salmon	<i>DDT</i>
XM_020656845		<i>Labrus bergylta</i>	ballan wrasse	<i>DDT</i>
XM_020465781		<i>Oncorhynchus kisutch</i>	coho salmon	<i>DDT</i>
XM_021601787		<i>Oncorhynchus mykiss</i>	rainbow trout	<i>DDT</i>
XM_003972089		<i>Takifugu rubripes</i>	tiger puffer	<i>DDT</i>
XM_020932980		<i>Boleophthalmus pectinirostris</i>	mudskipper	<i>DDT</i>
JX443546		<i>Oplegnathus fasciatus</i>	rock bream	<i>DDT</i>
CP026250		<i>Scophthalmus maximus</i>	turbot	<i>DDT</i>
XM_007256544		<i>Astyanax mexicanus</i>	Mexican tetra	<i>DDT</i>
BC135935		<i>Xenopus tropicalis</i>	tropical clawed frog	<i>DDT</i>
NM_001093982		<i>Xenopus laevis</i>	African clawed frog	<i>DDT</i>
XM_024195522		<i>Terrapene mexicana triunguis</i>	three toed box turtle	<i>DDT</i>
NM_001030667		<i>Gallus gallus</i>	chicken	<i>DDT</i>
AF012431		<i>Mus musculus</i>	mouse	<i>DDT</i>
NM_001243557		<i>Sus scrofa</i>	pig	<i>DDT</i>
NM_001099150		<i>Bos taurus</i>	cattle	<i>DDT</i>
AH006997		<i>Homo sapiens</i>	human	<i>DDT</i>
MK000388		<i>Lateolabrax japonicus</i>	Japanese sea bass	<i>MIF</i>
FJ447490		<i>Thunnus albacares</i>	yellowfin tuna	<i>MIF</i>
FJ404723		<i>Larimichthys crocea</i>	large yellow croaker	<i>MIF</i>
FN582353		<i>Dicentrarchus labrax</i>	European sea bass	<i>MIF</i>
NM_001309981		<i>Fundulus heteroclitus</i>	mummichog	<i>MIF</i>
XM_004073247		<i>Oryzias latipes</i>	Japanese ricefish	<i>MIF</i>
BT075514		<i>Osmerus mordax</i>	rainbow smelt	<i>MIF</i>
NM_001043321		<i>Danio rerio</i>	zebrafish	<i>MIF</i>
BT080024		<i>Esox lucius</i>	northern pike	<i>MIF</i>
NM_001123609		<i>Salmo salar</i>	Atlantic salmon	<i>MIF</i>
NM_001124581		<i>Oncorhynchus mykiss</i>	rainbow trout	<i>MIF</i>
GU988719		<i>Epinephelus coioides</i>	orange spotted grouper	<i>MIF</i>
EU368584		<i>Cyprinus carpio</i>	common carp	<i>MIF</i>
KY612294		<i>Ctenopharyngodon idella</i>	grass carp	<i>MIF</i>

KF888661	<i>Ictalurus punctatus</i>	channel catfish	MIF
NM_001032717	<i>Takifugu rubripes</i>	tiger puffer	MIF
BT082851	<i>Anoplopoma fimbria</i>	sablefish	MIF
XM_020927268	<i>Boleophthalmus pectinirostris</i>	mudskipper	MIF
AY856134	<i>Tetraodon nigroviridis</i>	green-spotted pufferfish	MIF
JX273154	<i>Oplegnathus fasciatus</i>	rock bream	MIF
FJ447489	<i>Sciaenops ocellatus</i>	red drum	MIF
BC156031	<i>Xenopus tropicalis</i>	tropical clawed frog	MIF
BC097727	<i>Xenopus laevis</i>	African clawed frog	MIF
XM_024195529	<i>Terrapene mexicana triunguis</i>	three toed box turtle	MIF
NM_001305091	<i>Gallus gallus</i>	chicken	MIF
NM_010798	<i>Mus musculus</i>	mouse	MIF
NM_001077213	<i>Sus scrofa</i>	pig	MIF
NM_001033608	<i>Bos taurus</i>	cattle	MIF
CR541651	<i>Homo sapiens</i>	human	MIF
